



REPUBLIC OF KENYA

MINISTRY OF LABOUR AND SOCIAL  
PROTECTION  
STATE DEPARTMENT FOR SOCIAL  
PROTECTION & SENIOR CITIZEN AFFAIRS

# Expansion of contributory and non- contributory social protection systems

*Social Protection Programme Manager, Rwanda and  
Burundi, International Labour Organisation (ILO)*

2023  
**KENYA  
SOCIAL PROTECTION  
CONFERENCE**



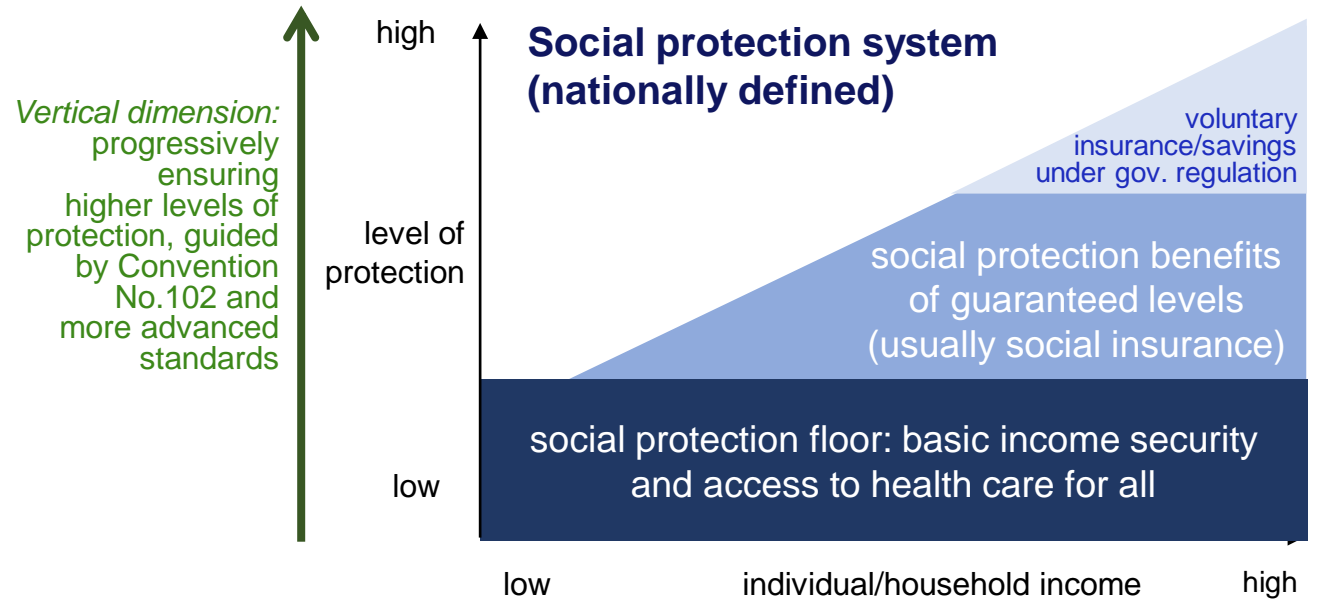
# Guaranteeing a social protection floor as part of national social protection systems



Internationally agreed framework provided by ILO Recommendation, 2012 (No. 202)

## Social protection floor guarantees

- ▶ Everyone has **access to essential health care**, including maternity care
- ▶ All **children** enjoy **basic income security**, providing access to nutrition, education, care, and any other necessary goods and services
- ▶ All **persons in active age** who cannot earn sufficient income, enjoy **basic income security**, particularly in cases of sickness, unemployment, maternity, disability
- ▶ All **older persons** enjoy **basic income security**



**Horizontal dimension:** Guaranteeing access to essential health care and minimum income security for all, guided by Recommendation No. 202

**Anchored in human rights framework and reflected in SDGs 1.3 and 3.8**

# Limited coverage of social protection constitutes not only a social challenge, but also an economic challenge



## Positive economic impacts of investments in social protection

**Micro level:  
individuals and households**

- building and protecting human capital
- empowering poor individuals to invest or to adopt higher return strategies
- enhancing productivity and employability

**Meso level:  
local economy**

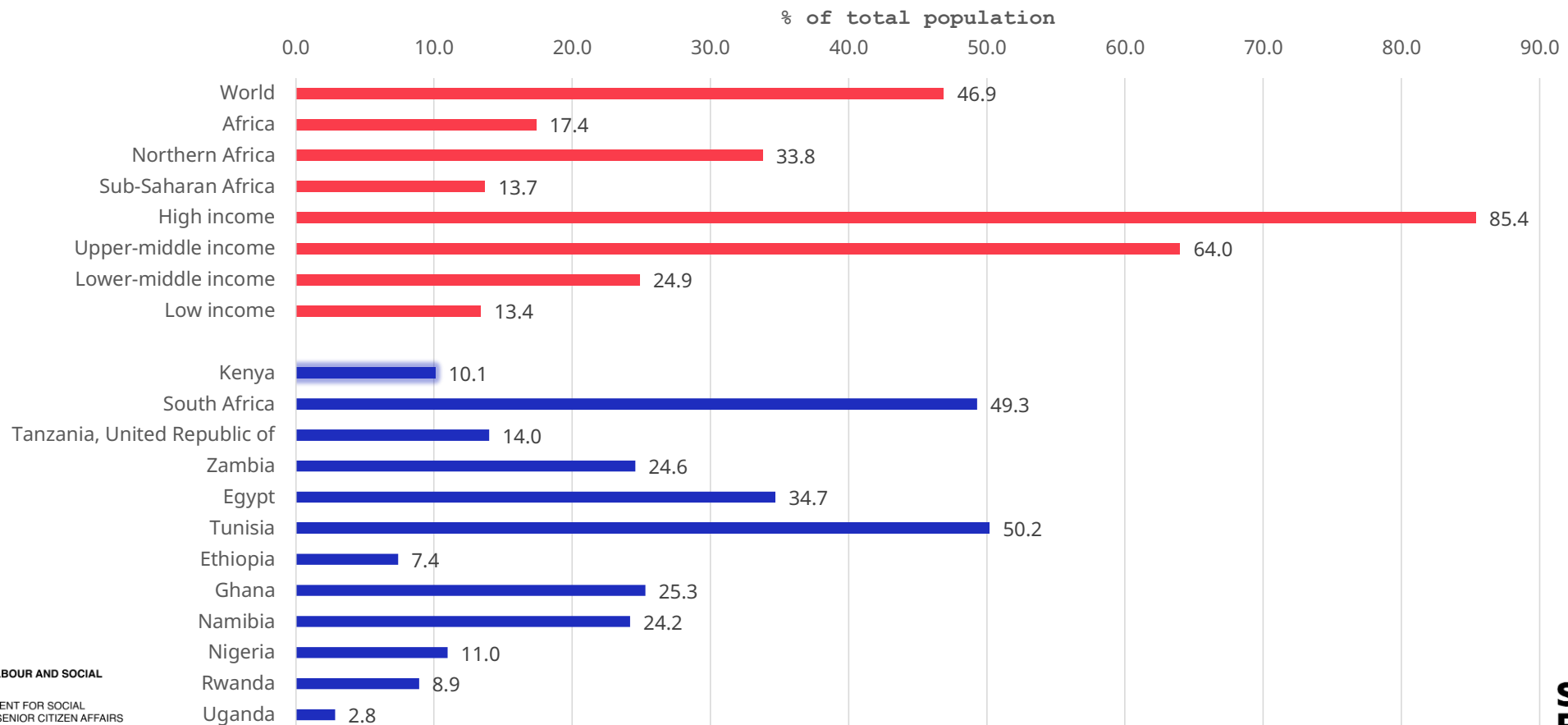
- enhancing community assets and infrastructure
- positive spillovers from beneficiaries to non-beneficiaries

**Macro level:  
overall economy**

- stabilizing aggregate demand
- facilitating structural change
- rendering growth-enhancing reforms more politically feasible
- Enhancing social cohesion



# SDG indicator 1.3.1: Effective social protection coverage, selected regions and countries, 2020 or latest available year



MINISTRY OF LABOUR AND SOCIAL PROTECTION  
STATE DEPARTMENT FOR SOCIAL PROTECTION & SENIOR CITIZEN AFFAIRS

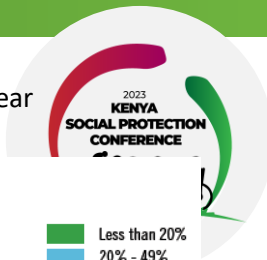
REPUBLIC OF KENYA

Accelerating Inclusive and Integrated Social Protection



# Informal employment and its drivers






Informal employment in per cent of total employment, latest year



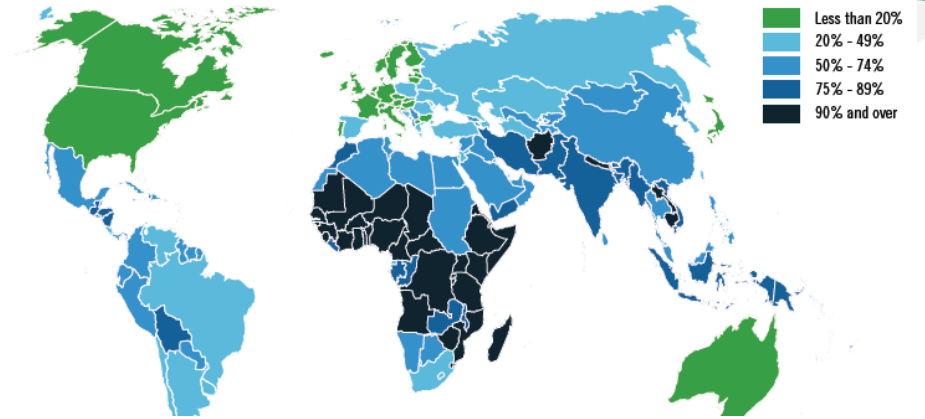
## Multiple drivers of informality

- ▶ Inability of the economy to create enough formal jobs
- ▶ Low productivity
- ▶ Inadequate or absent regulatory framework
- ▶ Weak enforcement systems
- ▶ Lack of transparency and accountability of public institutions
- ▶ Lack of information and awareness
- ▶ Lack of worker voice and representation
- ▶ **Lack of social protection (cause and consequence of informality)**

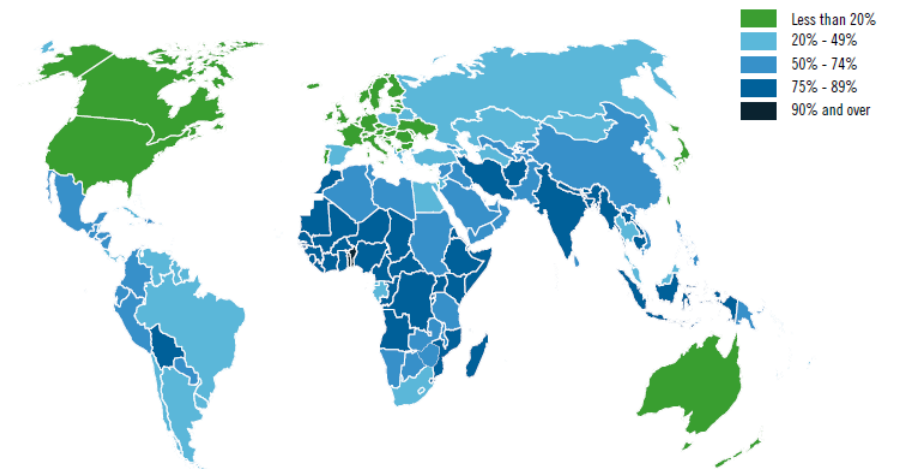
## Various barriers to social protection

-  Legal barriers
-  Financial barriers
-  Administrative barriers
-  Enforcement gaps
-  Lack of information/awareness

Panel A. Including agriculture<sup>9</sup>

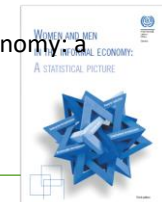


Panel B. Excluding agriculture

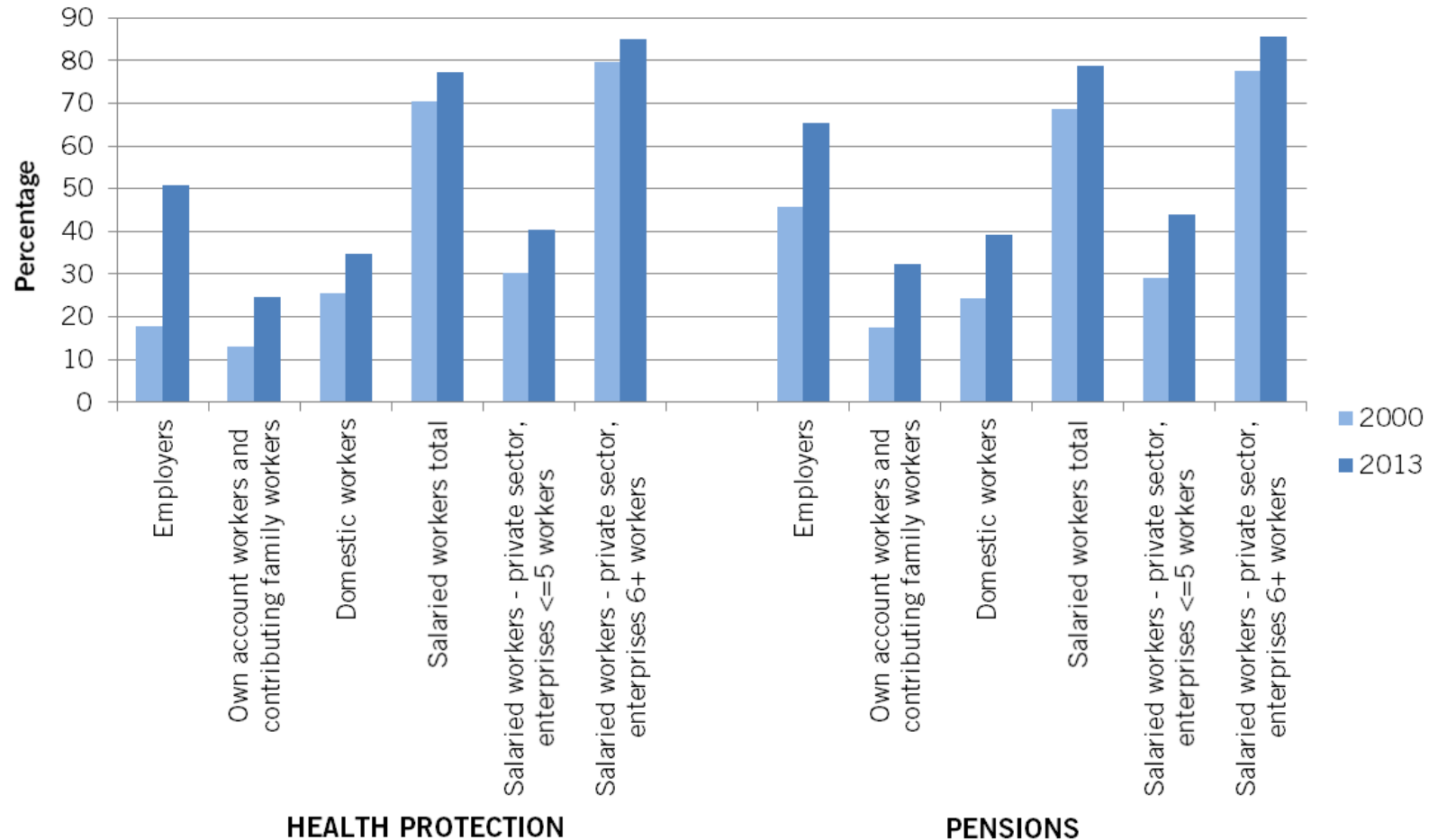


Source: ILO, 2018. Women and men in the informal economy: a statistical picture. Geneva.

[http://www.ilo.org/wcmsp5/groups/public/---ed\\_emg/documents/publication/wcms\\_626831.pdf](http://www.ilo.org/wcmsp5/groups/public/---ed_emg/documents/publication/wcms_626831.pdf)



# Extending social security coverage is possible: Health and pension coverage by status in employment in Latin America



Source: Based on ILO 2015: Panorama Laboral.

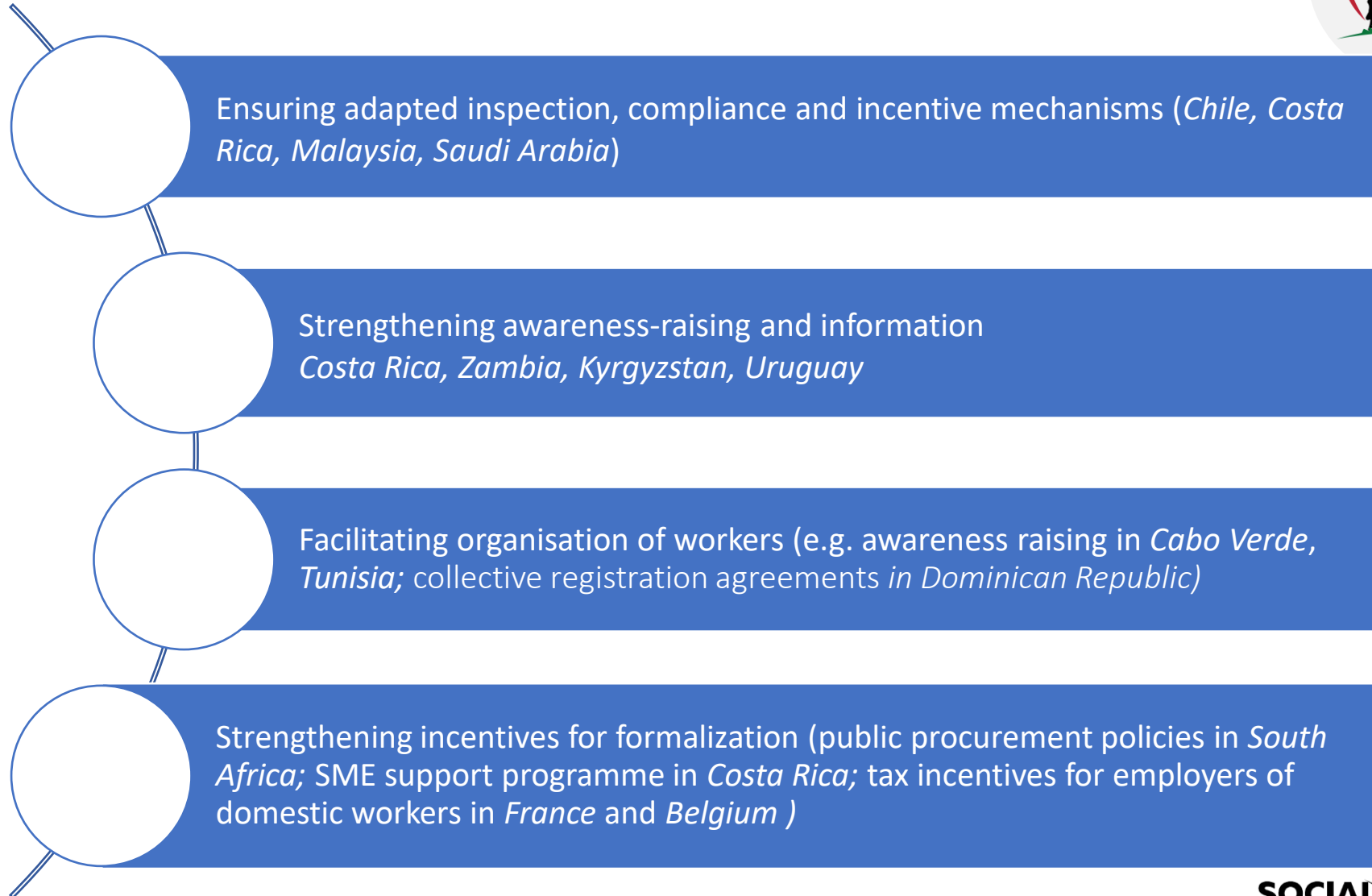


## Extending coverage: some practical measures (1)





## Extending coverage: some practical measures (2)







# ILO promotes a transformative approach to the extension of coverage

## «Informal workers»

Extension without a clear policy vision

Extension often limited to voluntary savings mechanisms

## Workers (recognizing heterogeneity)

- Differentiated and adapted approach
- ▶ Wage workers
    - ▶ Sector of employment
    - ▶ Occupation
    - ▶ Size of enterprise
  - ▶ Self-employed workers
    - ▶ Employers
    - ▶ Own-account workers
    - ▶ Contributing family members

Need to open the black box of «informal workers» to find adapted, sustainable and equitable policy solutions

Extension of social security coverage with a clear focus on facilitating transitions from the informal to the formal economy

**Transformative approach**  
More decent work, higher productivity, strengthened human capabilities, more sustainable and equitable social protection systems

# Harnessing digital technologies

- ▶ ICT capabilities and technologies enables the implementation of adequate social protection services to difficult-to-cover groups
- ▶ Defining and/or establishing an identification system
- ▶ Simplifying information requirements for registration and facilitating the registration process
- ▶ Implementing data quality assurance mechanisms
- ▶ Increased exchanges of information will require updated governance and control mechanisms to protect the privacy and integrity of the information and insure availability
- ▶ Establish an action plan showing provision for infrastructure, software, professional staff and an ICT investment plan
- ▶ Relevant technologies: mobile technologies, security and privacy, interoperability and data analytics
- ▶ Consider electronic payment and online services system for registration, delivering benefits & services and for collecting contributions

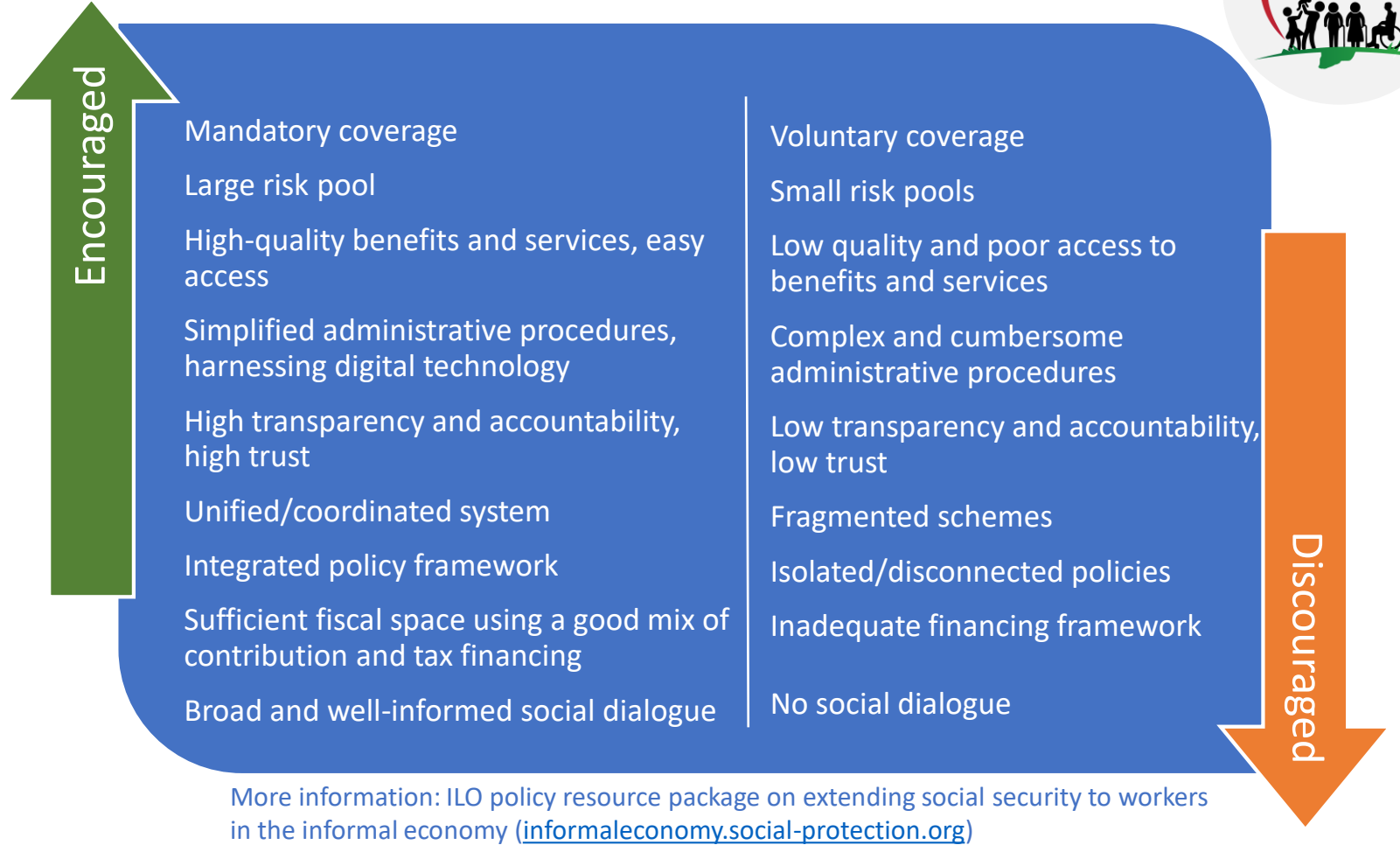
Effective service delivery capacity comes from harnessing ICT and data. This, combined with comprehensive social protection policies and adequate financing can ensure social protection rights for all



# How to accelerate the extension of social protection to those not yet protected?

## Key principles:

- ▶ Universality of protection, including for workers in all types of employment
- ▶ Adequacy
- ▶ Portability and transferability
- ▶ Transparency
- ▶ Gender equality
- ▶ Good governance and trust





REPUBLIC OF KENYA

MINISTRY OF LABOUR AND SOCIAL  
PROTECTION

STATE DEPARTMENT FOR SOCIAL  
PROTECTION & SENIOR CITIZEN AFFAIRS

# THANK YOU!

## ANY QUESTIONS?

YOU CAN FIND ME AT

[klein@ilo.org](mailto:klein@ilo.org)

@Aurelie\_Klein\_

