



REPUBLIC OF KENYA

MINISTRY OF LABOUR AND SOCIAL  
PROTECTION  
STATE DEPARTMENT FOR SOCIAL  
PROTECTION & SENIOR CITIZEN AFFAIRS

# Reaching Rural Populations

*Marco Knowles*

*Senior Social Protection Officer and Team Lead  
Social Protection Team*

*FAO*





# Why focus on rural populations?

## Concentration of poverty and vulnerability among rural population

	Rural	Urban
Poverty rate, 2017 (% people below national poverty line)	51.31%	33.78%
Prevalence of stunting, 2022 (% children under 5 years)	20.30%	12.10%

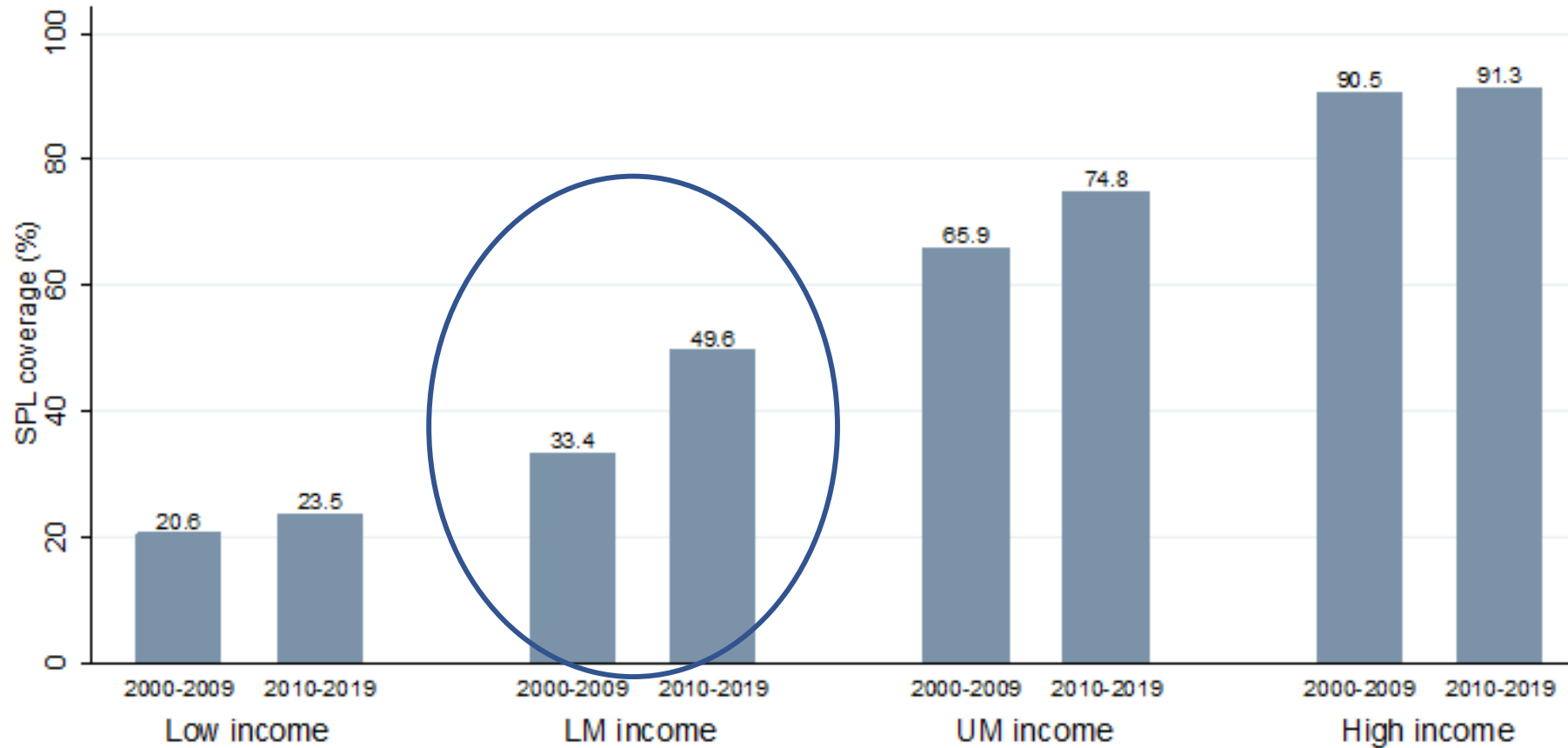
- High informality
- High exposure to climatic shocks
- Limited access to economic and social services





# Expand coverage in rural areas

## Rural population at the bottom quintile participating in Social Protection and Labor programs by country income group, 2000-2019 (% of total)



Source: Own calculation from ASPIRE database



REPUBLIC OF KENYA

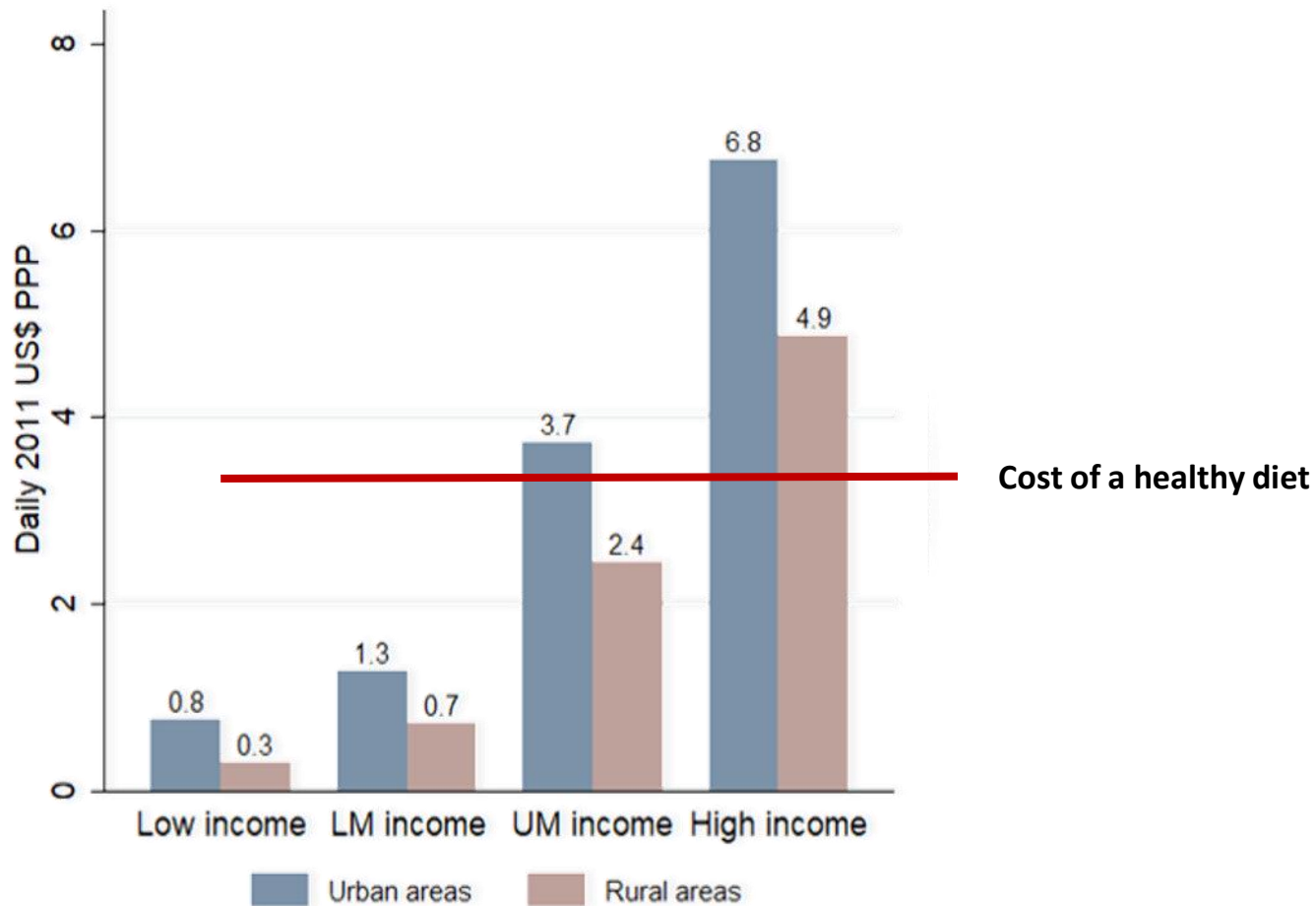
MIP PROTECTION  
STATE DEPARTMENT FOR SOCIAL PROTECTION & SENIOR CITIZEN AFFAIRS

Accelerating Inclusive and Integrated Social Protection



# Mind the transfer size

Average per-capita transfer by country income group, 2009-2019 vs cost of a healthy diet



# Systems adaptations for rural populations



Adjust transfer size to household size

Time payments with agricultural cycle

Compulsory social security contributions for self-employed agricultural workers

Digitalization yes, but be mindful of inclusiveness..

Climate finance

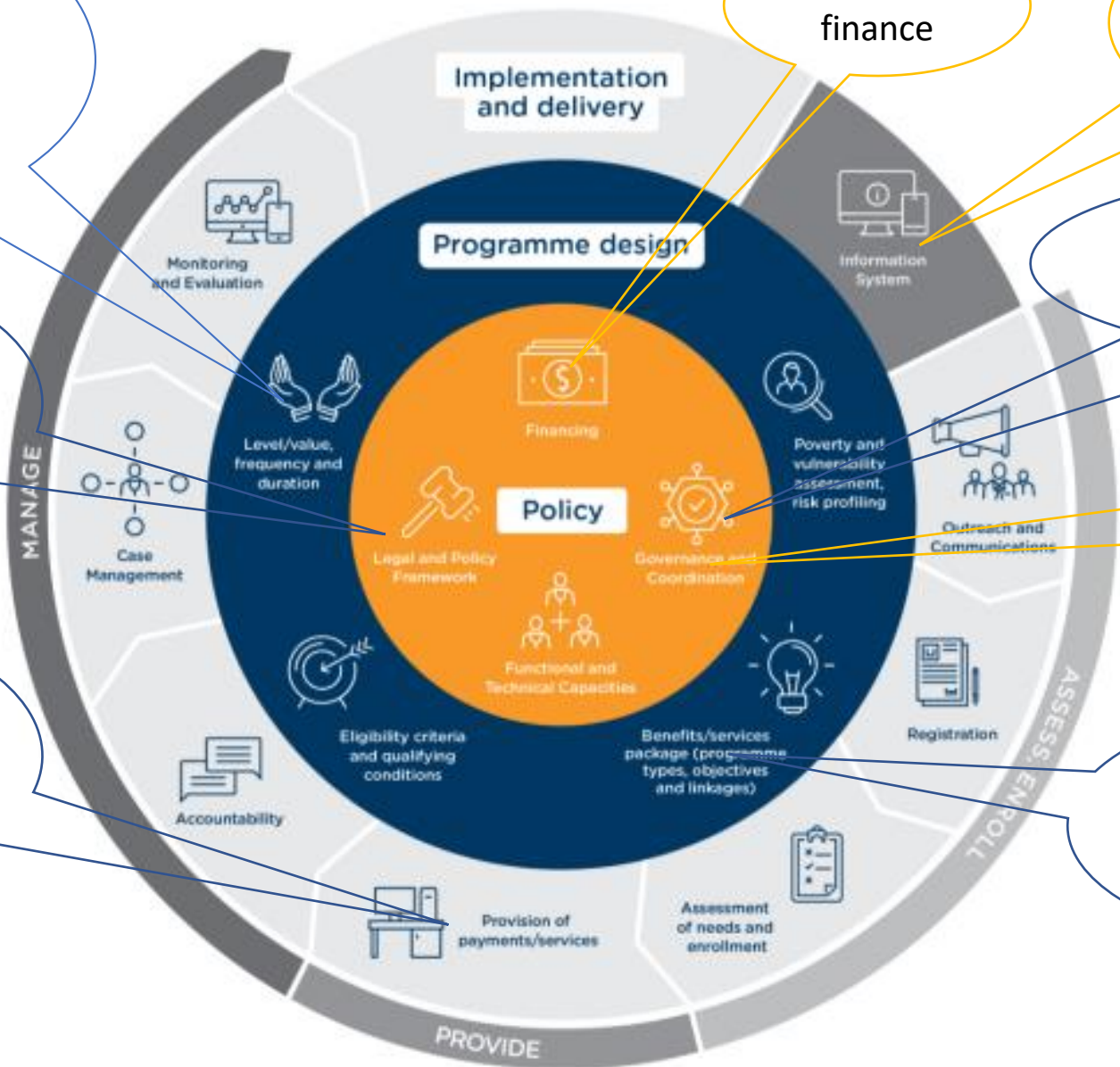
Interoperable farmer & social registries

Include social protection in agricultural, climate and rural development policies and vice-versa

Include representation of rural populations in governance mechanisms

Include agricultural production objectives

Provide agricultural services





# Three main windows of opportunity for expanding coverage to rural populations

Enhanced single registry and interoperability with farmer registry

Devolution and Community Based Organizations

Climate finance for social protection



# Window 1: Enhanced single registry and interoperability with farmer registry







# Window 2: Devolution and Community Based Organizations



Image credit: Nigel Bruce



REPUBLIC OF KENYA

MINISTRY OF LABOUR AND SOCIAL PROTECTION  
STATE DEPARTMENT FOR SOCIAL PROTECTION & SENIOR CITIZEN AFFAIRS

Accelerating Inclusive and Integrated Social Protection





# Window 3: Climate finance for social protection





REPUBLIC OF KENYA

MINISTRY OF LABOUR AND SOCIAL  
PROTECTION

STATE DEPARTMENT FOR SOCIAL  
PROTECTION & SENIOR CITIZEN AFFAIRS

# THANK YOU!

## ANY QUESTIONS?

YOU CAN FIND ME AT  
[Marco.Knowles@fao.org](mailto:Marco.Knowles@fao.org)

