



REPUBLIC OF KENYA

MINISTRY OF LABOUR AND SOCIAL
PROTECTION
STATE DEPARTMENT FOR SOCIAL
PROTECTION & SENIOR CITIZEN AFFAIRS

COORDINATION OF THE SOCIAL PROTECTION SECTOR

THE NEED | THE ELEMENTS | THE MODELS | THE CHALLENGES | THE
ACTIONS

OMONDI Otieno | Global Director – CHASP Advisory





THE CONCEPT

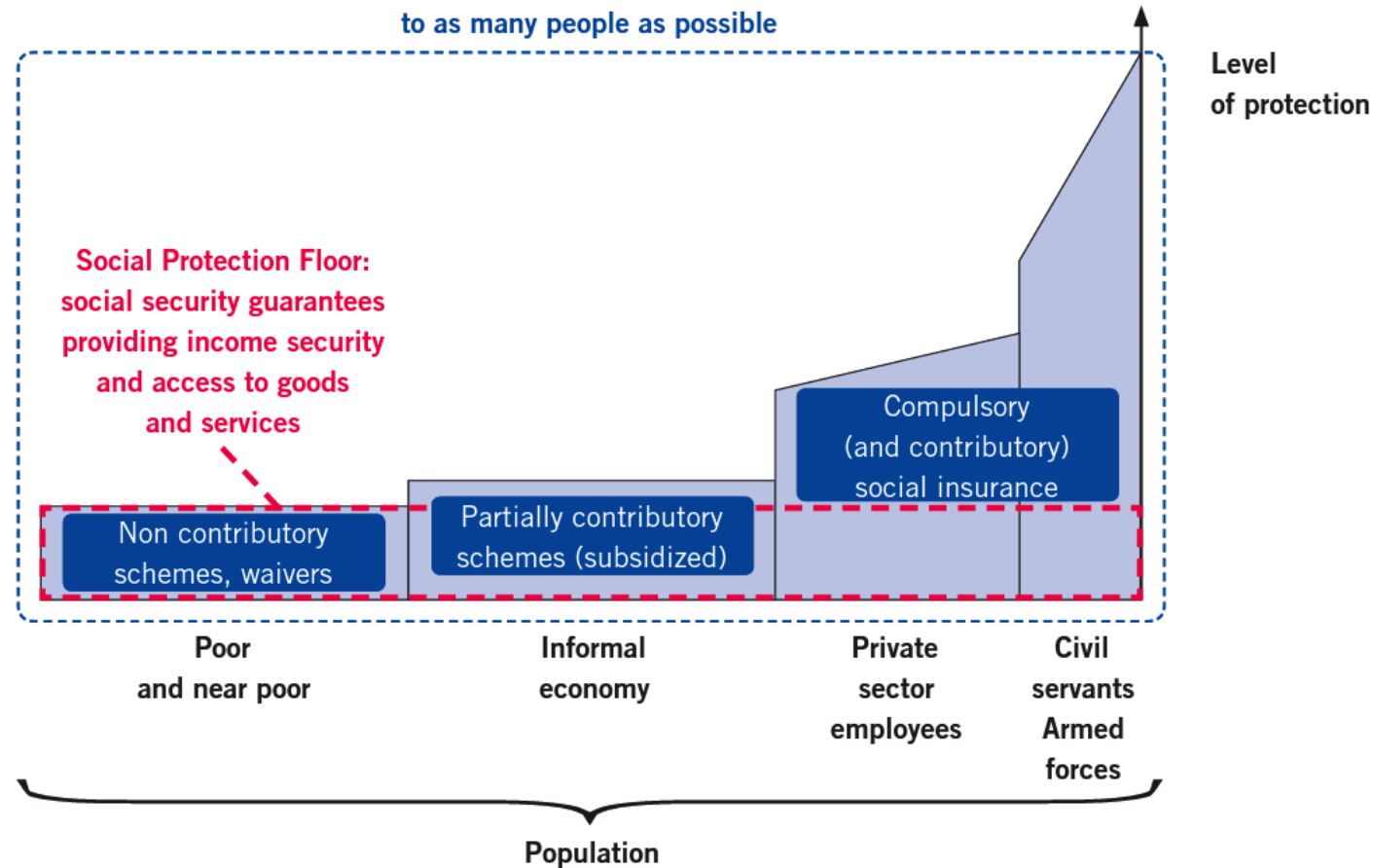
DEFINITION 1 | Coordination of social protection refers to the process of bringing together actors and institutions involved in social protection to ensure policies and programs are effective, efficient, and inclusive.

DEFINITION 2 | Coordination of social protection refers to the processes and mechanisms by which different social protection programs are integrated, harmonized, and aligned to achieve common goals. Effective coordination ensures that social protection programs complement each other, avoid duplication, and maximize their impact.



(Reminder) WHAT ARE WE COORDINATING?

Social protection system:
based on the SPF, provides higher levels of protection
to as many people as possible





WHY IS COORDINATION IMPORTANT?

MAXIMIZING IMPACT

Ensures that social protection programs are complementary and work together to address the different dimensions of poverty and vulnerability.

EFFICIENCY

Avoids duplication of efforts and resources and reduces administrative costs.

EQUITY

Ensures that social protection programs are accessible and available to all those who need them, regardless of their geographic location or socio-economic status.

SUSTAINABILITY

Ensures that social protection programs are designed and implemented in a sustainable way, taking into account the long-term needs of the target population.



REPUBLIC OF KENYA

MINISTRY OF LABOUR AND SOCIAL PROTECTION
STATE DEPARTMENT FOR SOCIAL PROTECTION & SENIOR CITIZEN AFFAIRS

Accelerating Inclusive and Integrated Social Protection

SOCIAL PROTECTION
enhancing synergies, improving lives



ELEMENTS OF COORDINATION

Monitoring and Evaluation

the regular assessment and reporting of program outcomes and impacts..

Policy Coherence

The alignment of social protection policies and programs with broader national development goals and strategies.



Stakeholder Participation

The involvement of beneficiaries, civil society, and other stakeholders in the design, implementation, and monitoring of social protection programs.

Institutional Coordination

The collaboration and communication among different institutions and actors responsible for social protection.



REPUBLIC OF KENYA

MINISTRY OF LABOUR AND SOCIAL PROTECTION
STATE DEPARTMENT FOR SOCIAL PROTECTION & SENIOR CITIZEN AFFAIRS

Accelerating Inclusive and Integrated Social Protection

SOCIAL PROTECTION
enhancing synergies, improving lives



COORDINATION MODELS

Many countries have established coordination mechanisms for social protection, such as inter-ministerial committees, task forces, or councils.

- **In Brazil**, the National Council for Social Assistance brings together government agencies, civil society organizations, and the private sector to coordinate social protection policies and programs.
- **In Rwanda**, the Social Protection Sector Working Group coordinates the efforts of different government agencies, NGOs, and donors to implement social protection programs.
- **In Kenya**, the establishment of the Social Protection Secretariat, the Directorate of Social Assistance, and presence of a donor working group
 - **In Ethiopia**, PSNP and the Joint Strategic Oversight Committee, and the Coordination Management Committee, and The Food Security Coordination Directorate





COMMON CHALLENGES

POLITICAL
WILL

LIMITED RESOURCE
ALLOCATION

FRAGMENTATI
ON

INADEQUATE
LEGAL
FRAMEWORKS

INSUFFICIENT DATA
& INFORMATION
SHARING

WEAK
INSTITUTIONAL
CAPACITIES

ABSENCE OF
SOPs

Overcoming these challenges requires sustained commitment and investment in coordination that will; Strengthen governance and leadership, Enhance institutional capacity, Improve data and information management, and Foster stakeholder engagement and participation



REPUBLIC OF KENYA

MINISTRY OF LABOUR AND SOCIAL
PROTECTION
STATE DEPARTMENT FOR SOCIAL
PROTECTION & SENIOR CITIZEN AFFAIRS

Accelerating Inclusive and Integrated Social Protection

**SOCIAL
PROTECTION**
enhancing synergies, improving lives



CONCLUSION

- Coordination is essential for ensuring that social protection policies and programs are **effective, efficient, and inclusive**.
- Coordination requires **the active engagement and collaboration** of a range of actors, including governments, NGOs, civil society organizations, and the private sector.
- Despite the challenges, the **benefits of coordination are significant**, and sustained investment and commitment are necessary to overcome these challenges and ensure the success of social protection programs.
- Effective coordination requires **clear institutional arrangements, information systems, legal frameworks, communication and outreach strategies, and monitoring and evaluation systems**. By ensuring effective coordination of social protection programs, **WE CAN REDUCE POVERTY AND VULNERABILITY** and promote **Social inclusion for all**.





REPUBLIC OF KENYA

MINISTRY OF LABOUR AND SOCIAL
PROTECTION

STATE DEPARTMENT FOR SOCIAL
PROTECTION & SENIOR CITIZEN AFFAIRS

THANK YOU!

ANY QUESTIONS?

Omondi@chasp.co.ke | Twitter:
[@otienoomondi](https://twitter.com/otienoomondi)

