



REPUBLIC OF KENYA

MINISTRY OF LABOUR AND SOCIAL  
PROTECTION  
STATE DEPARTMENT FOR SOCIAL  
PROTECTION & SENIOR CITIZEN AFFAIRS



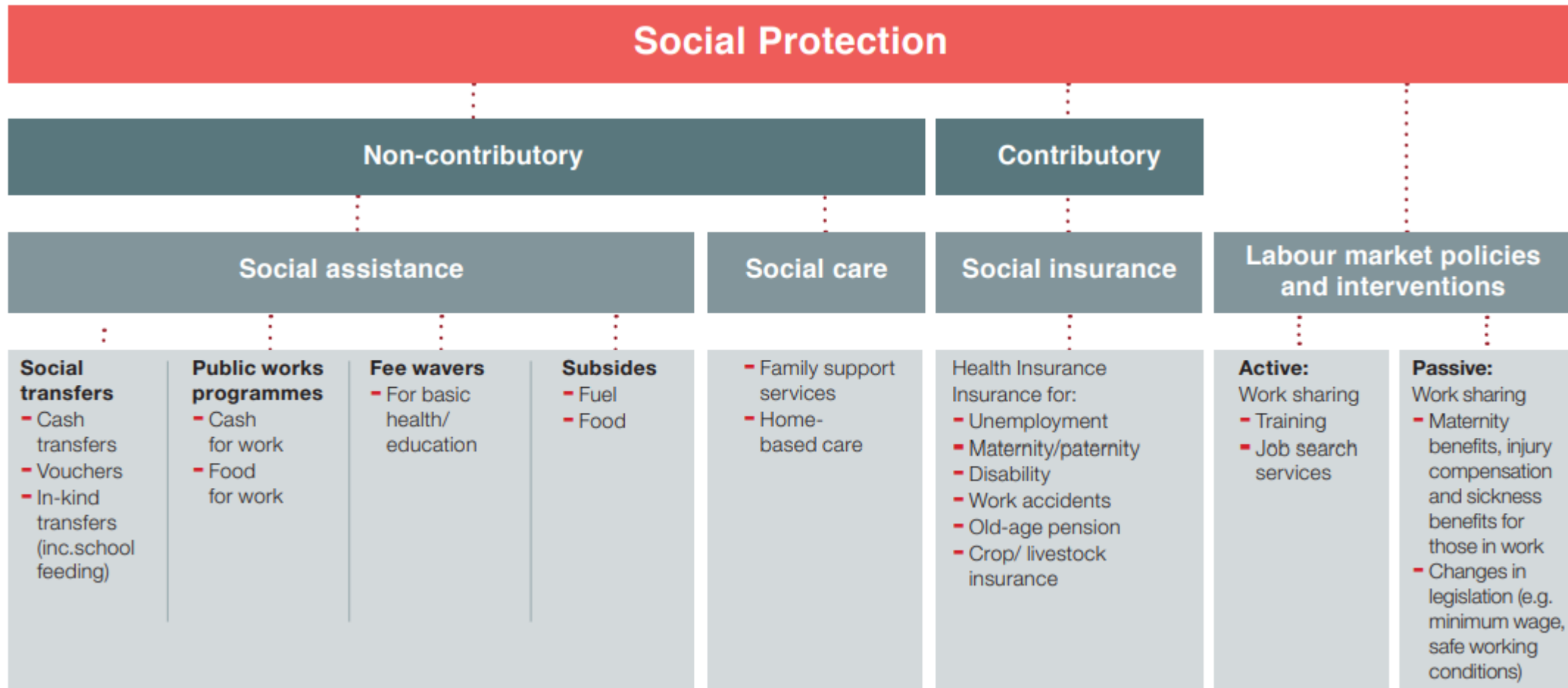
2023  
**KENYA**  
**SOCIAL PROTECTION**  
**CONFERENCE**

# Operational linkages between Social Protection Systems, Disaster Preparedness, Early Warning and Management

*Peter Murgor,*  
*CVA, Markets & Social Protection Manager,*  
*Kenya Red Cross*  
&  
*Kenya Cash Working Group Co-chair*



# Social Protection Systems





# Disaster Risk Management

- Disaster Risk Management (DRM) has 5 core focus points:
  - *prevention, mitigation, preparedness, response, and recovery*

These five focal points can be met through shock responsive social protection and there are many intersections and parallels between the five focal points of DRM and shock responsive social protection



REPUBLIC OF KENYA

MINISTRY OF LABOUR AND SOCIAL  
PROTECTION  
STATE DEPARTMENT FOR SOCIAL  
PROTECTION & SENIOR CITIZEN AFFAIRS

Accelerating Inclusive and Integrated Social Protection

**SOCIAL  
PROTECTION**  
enhancing synergies, improving lives



# EWS and Management

- An effective EWS comprise 4 interacting elements:
  - Risk Knowledge
  - Monitoring and warning services
  - Dissemination and communication
  - Response Capability



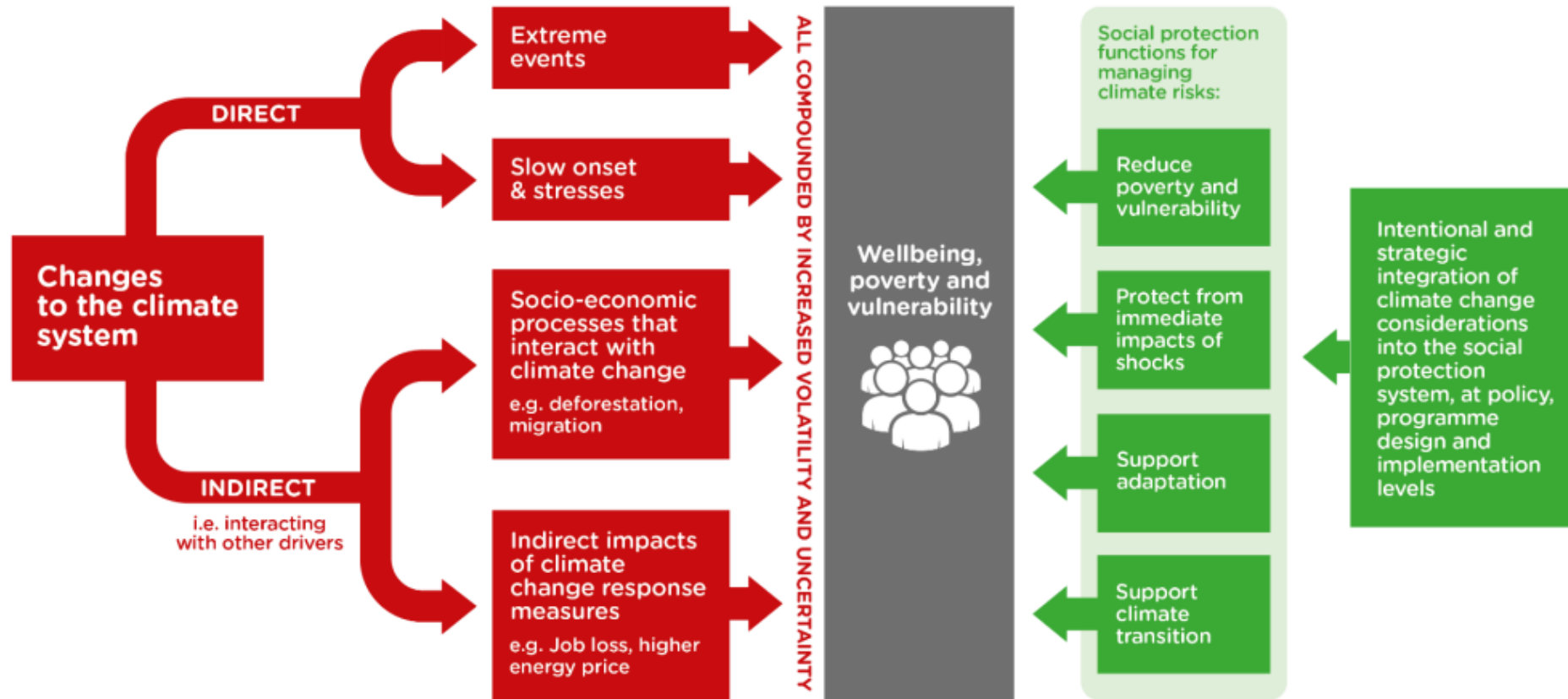
REPUBLIC OF KENYA

MINISTRY OF LABOUR AND SOCIAL  
PROTECTION  
STATE DEPARTMENT FOR SOCIAL  
PROTECTION & SENIOR CITIZEN AFFAIRS

Accelerating Inclusive and Integrated Social Protection

**SOCIAL  
PROTECTION**  
enhancing synergies, improving lives

# The Impact of climate Change..



# Adoptive Social Protection

- ASP helps build the resilience of poor and vulnerable households by investing in their capacity to **prepare for, cope with, and adapt** to shocks, ensuring that they do not fall into deeper poverty
- ASP helps address increasing risks and compounding crises from climate and other humanitarian disasters

Framework for adaptive social protection: Four building blocks



Image from Bowen et al. (2020)



REPUBLIC OF KENYA

MINISTRY OF LABOUR AND SOCIAL PROTECTION

STATE DEPARTMENT FOR SOCIAL PROTECTION & SENIOR CITIZEN AFFAIRS

# THANK YOU!

## ANY QUESTIONS?

YOU CAN FIND ME AT

