



REPUBLIC OF KENYA

MINISTRY OF LABOUR AND SOCIAL  
PROTECTION  
STATE DEPARTMENT FOR SOCIAL  
PROTECTION & SENIOR CITIZEN AFFAIRS

# Leveraging on technology to increase access to Social Protection: **Rwanda** and **Cambodia** Case studies on identification of persons with disability

**Susan Momanyi**

Social Policy Specialist/Disability Inclusion Focal Point

UNICEF Kenya

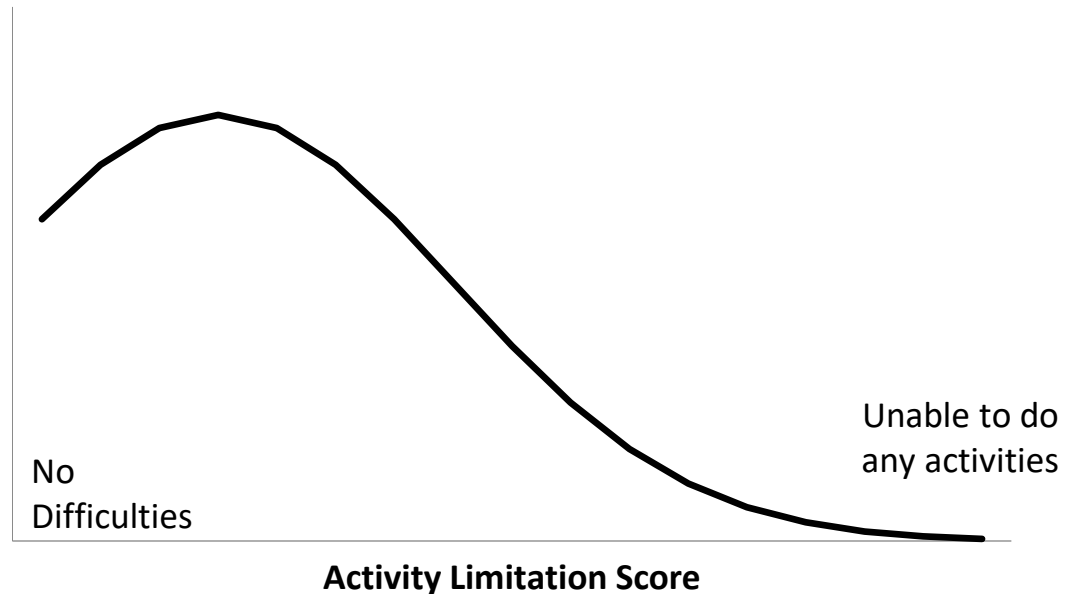


# Lessons learned from COVID 19 crisis

- Hard to carry out reliable disability assessment in crisis
- Importance of having social protection registries that identify household with persons with disabilities
- Investing in comprehensive national individual disability registries and interoperability of national registries
- Moving beyond disability assessment solely for narrow eligibility determination but for documenting support needs
- Enabling coordination across sectors and levels of government



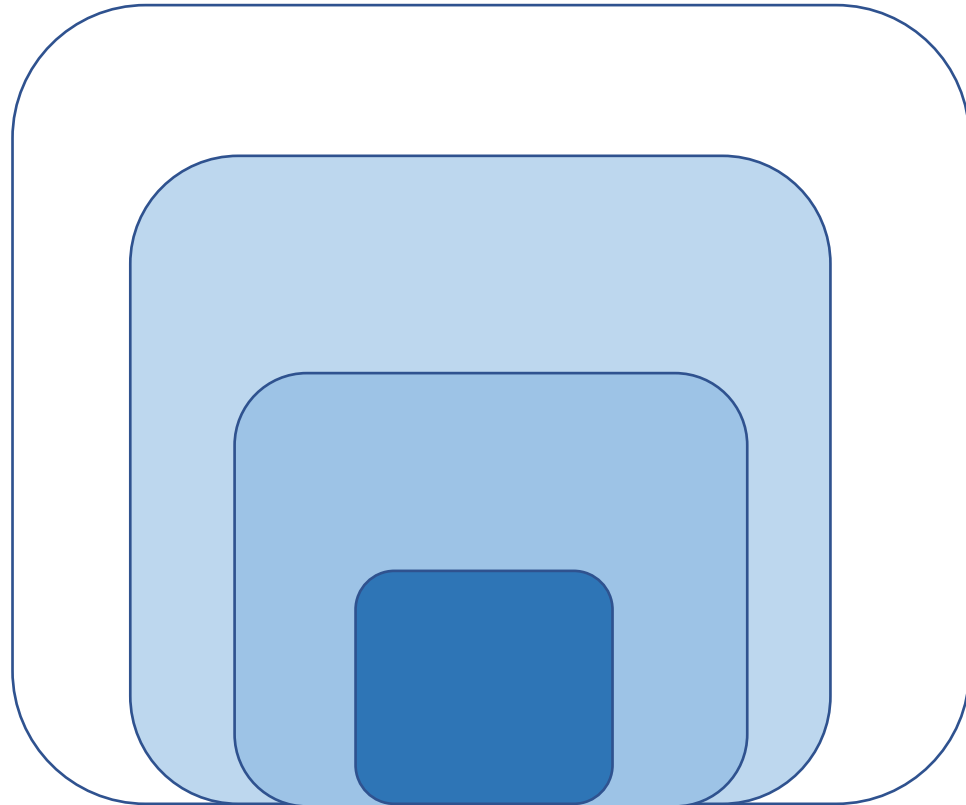
# Human functioning is not a binary variable



- The Activity Limitation Score is an index of a person's ability to do a wide range of various activities
- Score of 0 means no difficulty doing anything. Max score means unable to do any activity
- **Where is the line that separates people with and without disabilities?**

# Behind the numbers...

## A diversity of situations and policy implications



2-4%

Includes persons usually referred as having severe disability which may requires significant support. In many countries those are the persons who may received disability benefits

7-10%

Includes also persons with significant disability who would require some kind of assistance, assistive technology and inclusive environment for daily activities.

15%

Includes also all persons with any kind of functional limitations or impairment who would benefit from some assistance but mostly inclusive environment

More

Not “persons with disabilities” but at times directly benefit from assistance or inclusive environment (pregnant women, people with injury or sickness...)

# The challenging equation of CRPD compliant disability assessment and determination:

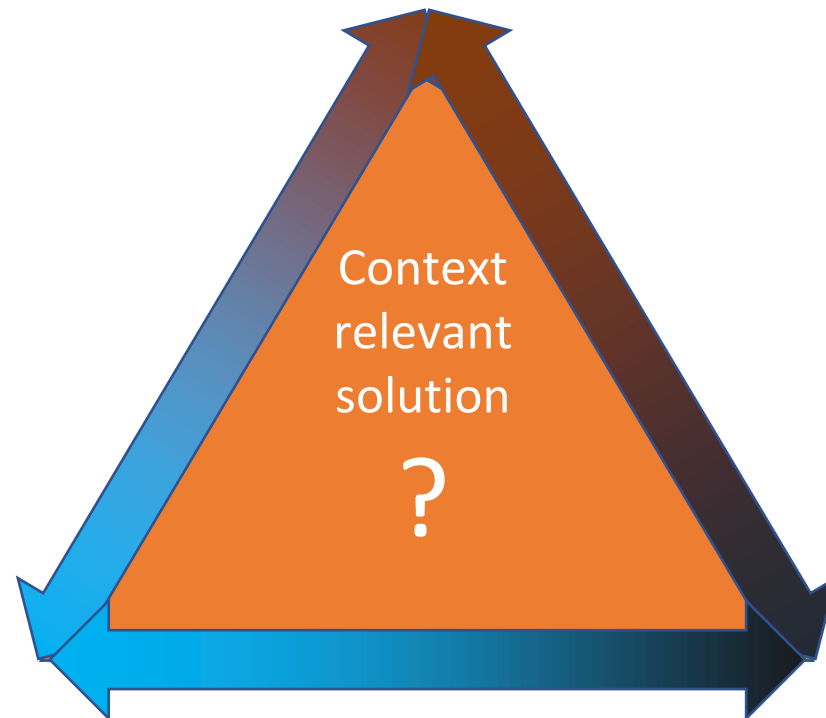
**COMPREHENSIVE** (not only impairment and include **support needs**)

**INCLUSIVE** (All persons with disabilities)

**AGE APPROPRIATE** (Children and adults)

**GENDER SENSITIVE**

**RESPECTING PRIVACY AND DIGNITY**



**EASILY ACCESSIBLE**

(availability, physical, information,  
communication accessibility)

**FREE FOR**

**ALL PERSONS WITH DISABILITIES  
EVERYWHERE IN THE COUNTRY**

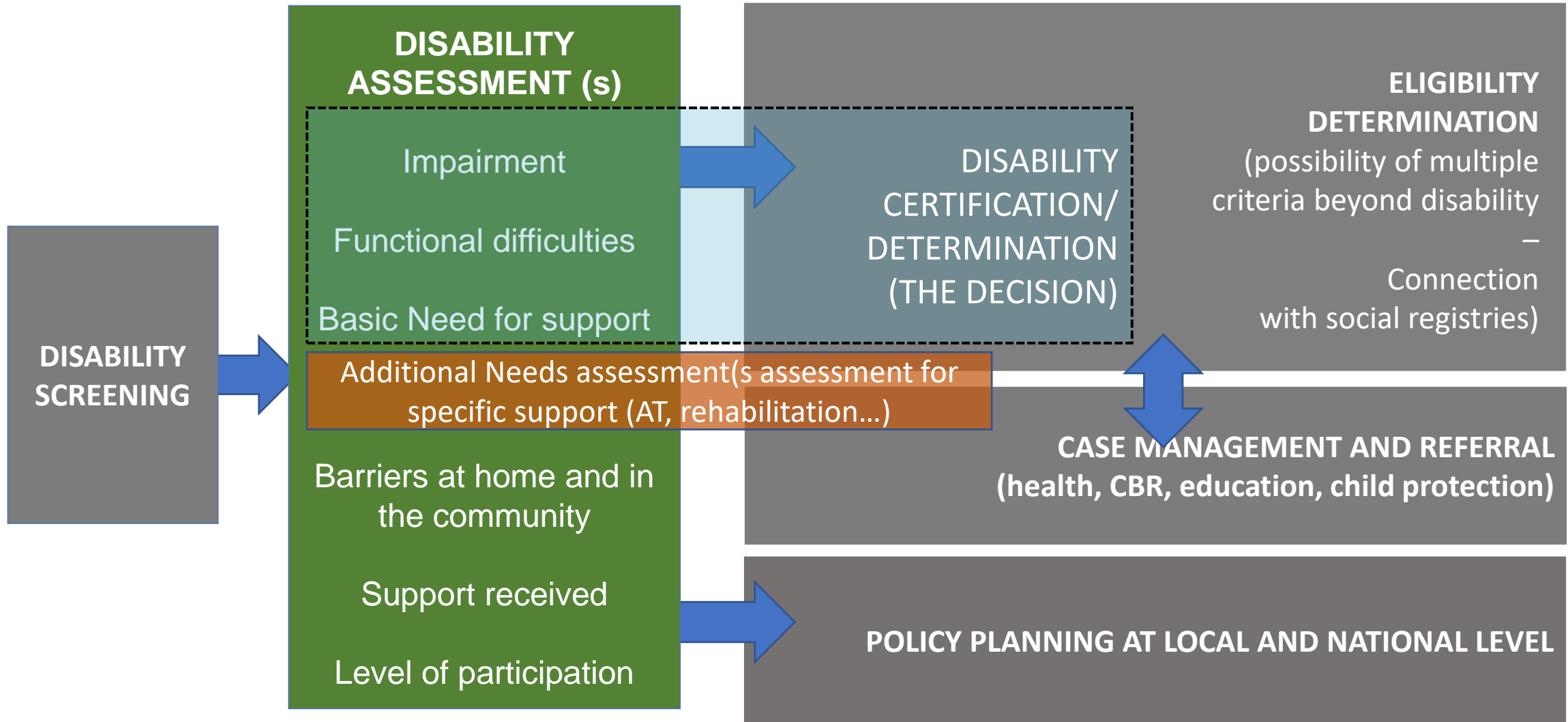
**RELIABLE** (limit fraud and complaints)

**ACCOUNTABLE** (responsive and transparent  
process and grievance mechanisms)

**PARTICIPATORY** (involvement of organizations  
of persons with disabilities)

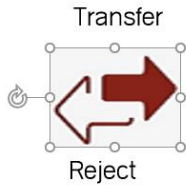
**CONNECTED** (interoperable with other  
registries)

# Disability assessment for different purposes



# Social and Rights-based Disability Identification in Cambodia

- Digitalized system with service available in **1,652** communes/sankgats



1. Data transfer from Communes

2. Data check and verify by Provinces

3. Approval by MoSVY

Case management and status updates in-built into on-demand system

With engagement of **4,900** trained commune workers

Looking into social and environmental dimensions to determine 3 levels of disability

In strong collaboration with grass-root CSOs and DPOs

With inter-ministerial coordination and monitoring structure

# Social and Rights-based Disability Identification in Cambodia

- Digital data collection with direct flow into Disability Management Information System (DMIS)
- With digital links to Cash Transfer MIS and ID Poor Database

The screenshot shows the DMIS website interface with the following data:

**គ្រប់គ្រងកម្មវិធី**

- លទ្ធផលសង្ខេបនៃការអនុវត្ត
- ការណែនាំឯកភាព
- ការណែនាំបន្ត
- របាយការណ៍អនុវត្តកម្មវិធី
- របាយការណ៍កំណត់សំខាន់ៗ
- ឯកសារជំនួយស្នូល
- អំពីកម្មវិធី

**ចំនួនជនមានពិការភាពបានមកសម្ភាសន៍ (ទូទាំងប្រទេស)**

លទ្ធផលអត្តសញ្ញាណពិការភាពថ្ងៃនេះ	
ចំនួនជនមានពិការភាពស្នើសុំពីឃុំ សង្កាត់	22
ចំនួនជនមានពិការភាពស្នើសុំពីមន្ទីរ	2
លទ្ធផលអនុវត្តកម្មវិធីសរុប	
អ្នកមកធ្វើអត្តសញ្ញាណពិការភាពសរុប	257,661
ចំនួនជនមានពិការភាពស្នើសុំពីឃុំ សង្កាត់	257,661
ចំនួនជនមានពិការភាពស្នើសុំពីមន្ទីរ	233,027
ចំនួនជនមានពិការភាព ដែលក្រសួងបានអនុម័ត	228,362
ជនមានពិការភាពភេទស្រី	121,928
ជនមានពិការភាពភេទប្រុស	135,733
<b>ចំនួនកាតពិការភាពដែលបានបោះពុម្ព : 222,148</b>	

**ចំនួនជនមានពិការភាពតាមប្រភេទ និងកម្រិតទូទាំងប្រទេស**

ប្រភេទពិការភាព	កម្រិត១	កម្រិត២	កម្រិត៣	សរុប
កាយសម្បទា	25,360	16,026	87,231	128,617
ញាណដឹង	36,349	22,960	14,281	73,590
សតិបញ្ញា	4,184	5,007	10,577	19,768
ផ្លូវចិត្ត	3,926	3,176	3,282	10,384
ពិការភាពផ្សេងៗ	240	4,510	12,784	17,534
<b>សរុប</b>	<b>70059</b>	<b>51679</b>	<b>128155</b>	<b>249893</b>
<b>ទិន្នន័យពិការភាពគ្មានប្រភេទពិការភាព</b>				<b>7768</b>



# Rwanda Disability information identified Gaps



- Lack of disability data, although UNCRPD was ratified in 2008
- Identification based on medical model
- Lack of knowledge about barriers and needs of persons with disability
- Lack of support to persons with disabilities who are most in need
- Absence of use of International validated instruments
- Children with disabilities under 5 years not captured in data collection
- Disability not linked to social protection



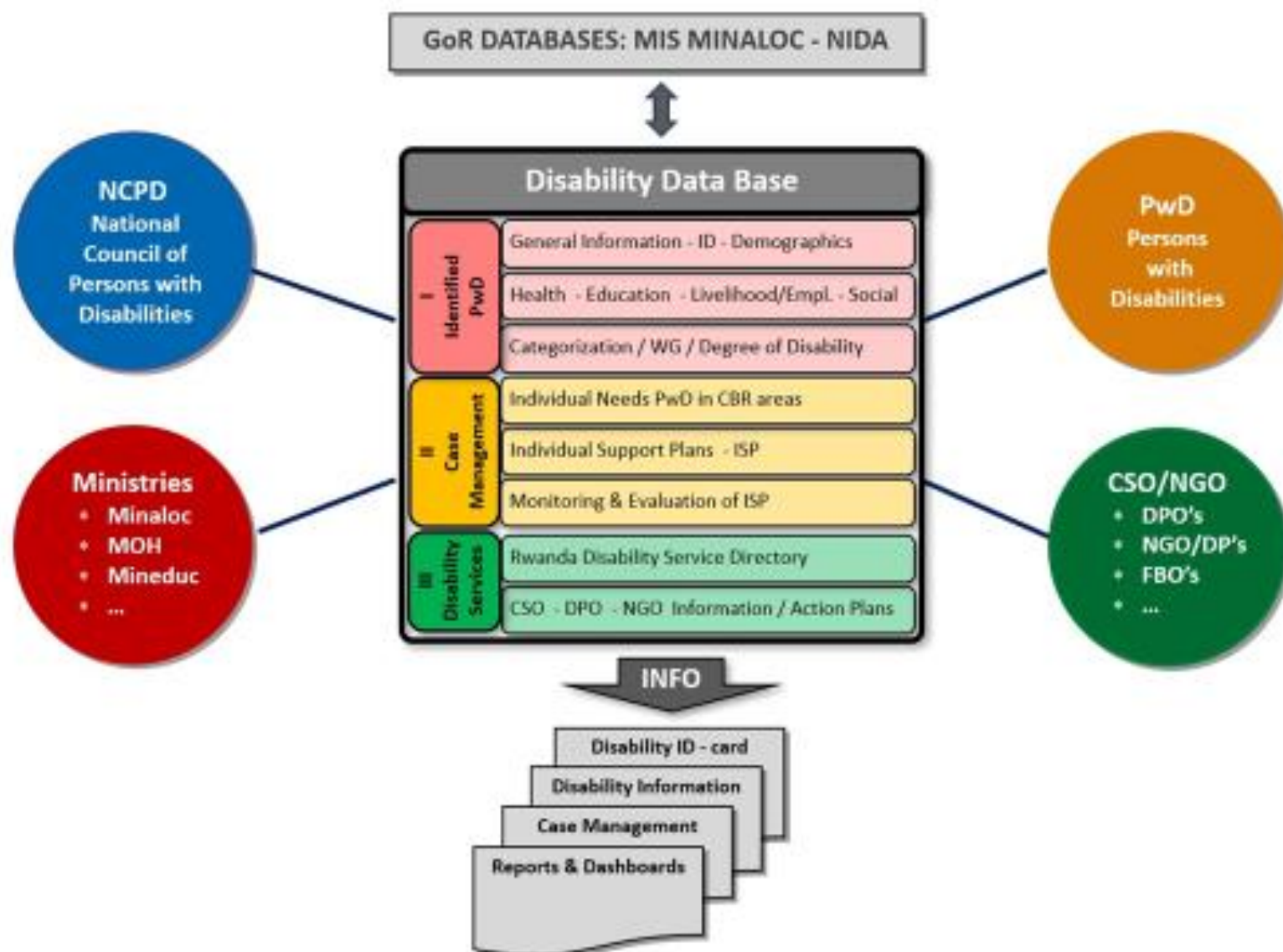
REPUBLIC OF KENYA

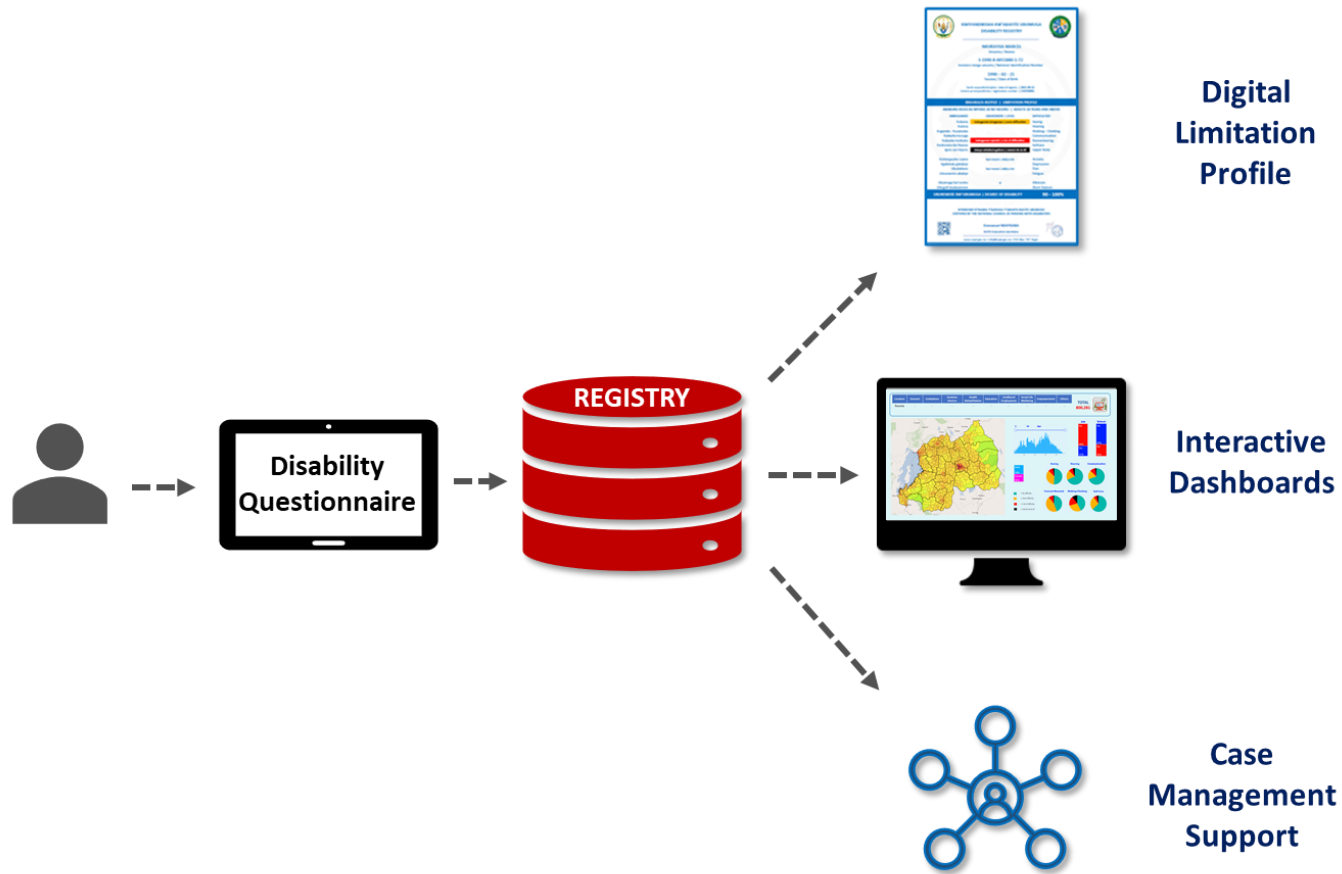
MINISTRY OF LABOUR AND SOCIAL  
PROTECTION  
STATE DEPARTMENT FOR SOCIAL  
PROTECTION & SENIOR CITIZEN AFFAIRS

Accelerating Inclusive and Integrated Social Protection

**SOCIAL  
PROTECTION**  
enhancing synergies, improving lives

# Systeme d'information sur les personnes handicapées au Rwanda 2021





# Registration Process



REPUBLIC OF KENYA

MINISTRY OF LABOUR AND SOCIAL PROTECTION  
STATE DEPARTMENT FOR SOCIAL PROTECTION & SENIOR CITIZEN AFFAIRS

Accelerating Inclusive and Integrated Social Protection





# Questionnaire

①

Socio - Demographic Information

②

Washington Group – Short & Extended Set – WG Children

③

Assistive Devices – Personal Assistance – School Environment

④

Barriers, unmet needs and priorities based on CBR/CBID areas



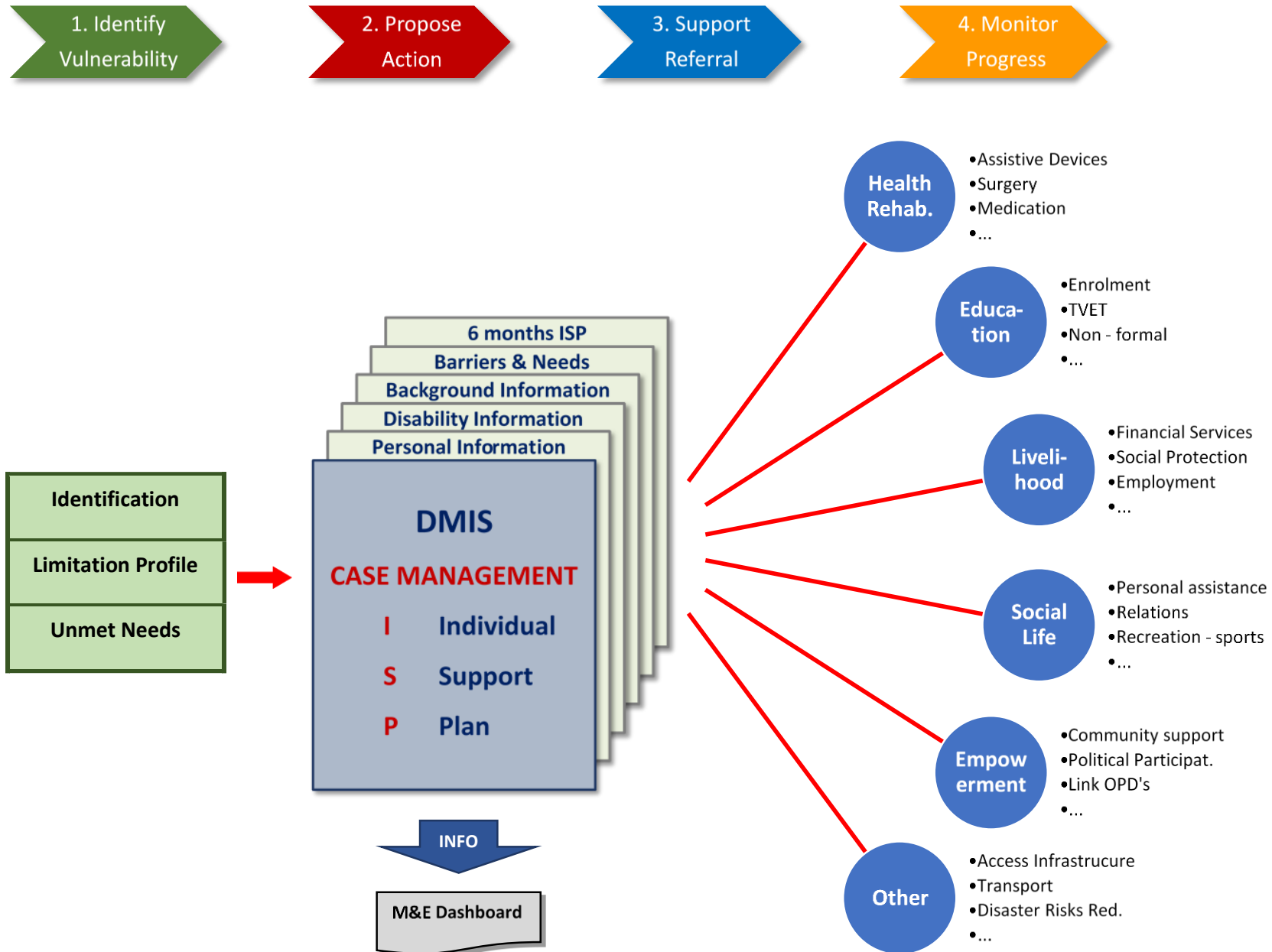
REPUBLIC OF KENYA

MINISTRY OF LABOUR AND SOCIAL  
PROTECTION  
STATE DEPARTMENT FOR SOCIAL  
PROTECTION & SENIOR CITIZEN AFFAIRS

Accelerating Inclusive and Integrated Social Protection

**SOCIAL  
PROTECTION**  
enhancing synergies, improving lives

# Case Management Framework



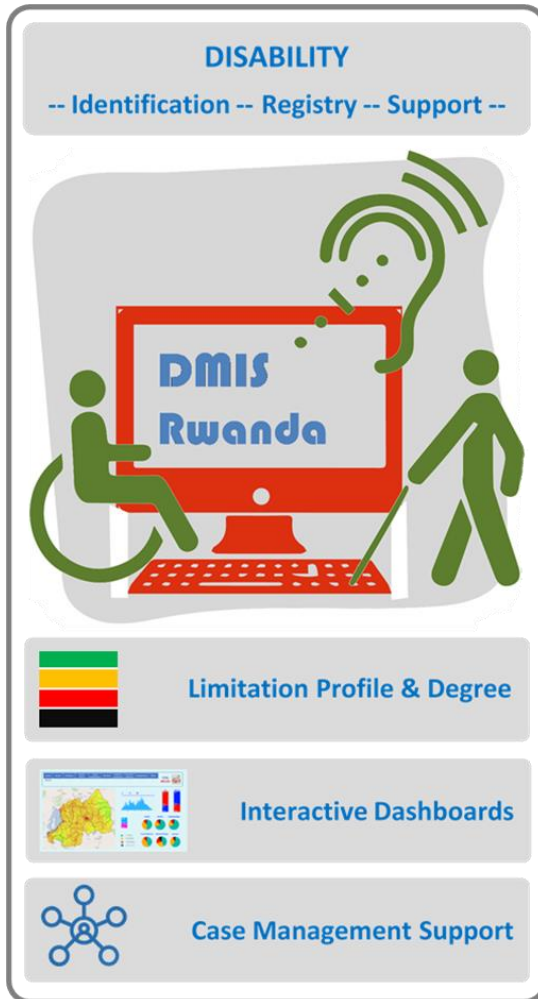


IBIGARAZA INZITIZI   LIMITATION PROFILE		
ABAKURU KUVA KU MYAKA 18 NO HEJURU   ADULTS 18 YEARS AND ABOVE		
IMBOGAMIZI	UBUREMERE   LEVEL	DIFFICULTIES
Kubona Kumva Kugenda Kubasha kuvuga Kwibuka ibyahise Kwikorera iby'ibanze Igice cyo hejuru	<b>imbogamizi ziringaniye   some difficulties</b>	Seeing Hearing Mobility Communication Remembering Selfcare Upper Body
Guhangayika cyane Agahinda gakabije Ububabare Umunaniro ukabije	<b>imbogamizi nyinshi   a lot of difficulties</b>	Anxiety Depression Pain Fatigue
Ubumuga bw'uruhu Ubugufi budasanzwe	<b>ntacyo ashobora gukora   cannot do at all</b>	Albinism Short Stature
	<b>90 - 100%</b>	
<b>UBUREMERE BW'INZITIZI</b>	<b>90 - 100%</b>	<b>LIMITATION DEGREE</b>





# DMIS FEATURES & BENEFITS



- On-demand identification & registry
- Real time dashboards & maps on indicators
- Case-Management support for the most in need
- Link to databases including social support
- Individual check of limitation status
- Grievances & Appeal system
- Limitation profile for possible benefits
- Disability information for research purposes
- Comparison with census data on different levels



# Call to Action



**Identification:** Not only assessing impairment but also support needs such as Assistive technology, Human assistance, housing, transport etc. to facilitate case management and policy planning

**Assessment Tools:** Ensuring that disability assessment tools and mechanisms are designed to allow universal access across the country

**Interoperability:** KISE school data, NCPWD MIS, CPMIS CCTPMIS

**Increased Coverage:** Expansion to informal sector that is market driven products for social security and health insurance, CBHI – Rwanda, #Bamba20 – Kenya with clear policy guidelines

**Systems leverage:** Utilization of Enhanced single registry for ease data availability and use for programming

**Shock responsive:** COVID, Drought, Floods, internal displacement



REPUBLIC OF KENYA

MINISTRY OF LABOUR AND SOCIAL  
PROTECTION  
STATE DEPARTMENT FOR SOCIAL  
PROTECTION & SENIOR CITIZEN AFFAIRS

Accelerating Inclusive and Integrated Social Protection

**SOCIAL  
PROTECTION**  
enhancing synergies, improving lives



REPUBLIC OF KENYA

MINISTRY OF LABOUR AND SOCIAL  
PROTECTION

STATE DEPARTMENT FOR SOCIAL  
PROTECTION & SENIOR CITIZEN AFFAIRS

# THANK YOU!

## ANY QUESTIONS?

<https://www.unicef.org/topics/kenya>

<https://www.unicef.org>

