

1REGISTRY
eSolution for social accountability

2018
**Social
Protection
Conference**
KENYA

invest • implement • impact



Kenya Single Registry

Evelyn W. Mwangi, Senior ICT Officer, SPS

22 March 2018

Single Registry



- A **policy tool** to provide a single point of reference for information social protection sector in Kenya
- Consolidates programme information from different social protection implementer's MIS into one web portal.



Our Journey



Inua Jamii is launched to consolidate programmes into a national safety net.



The Management Information Systems Working Group is formed to strengthen safety nets systems.



The National Social Protection Policy is approved, and the Social Protection Secretariat is established to strategically coordinate the sector.



Inua Jamii programmes link their MISs.



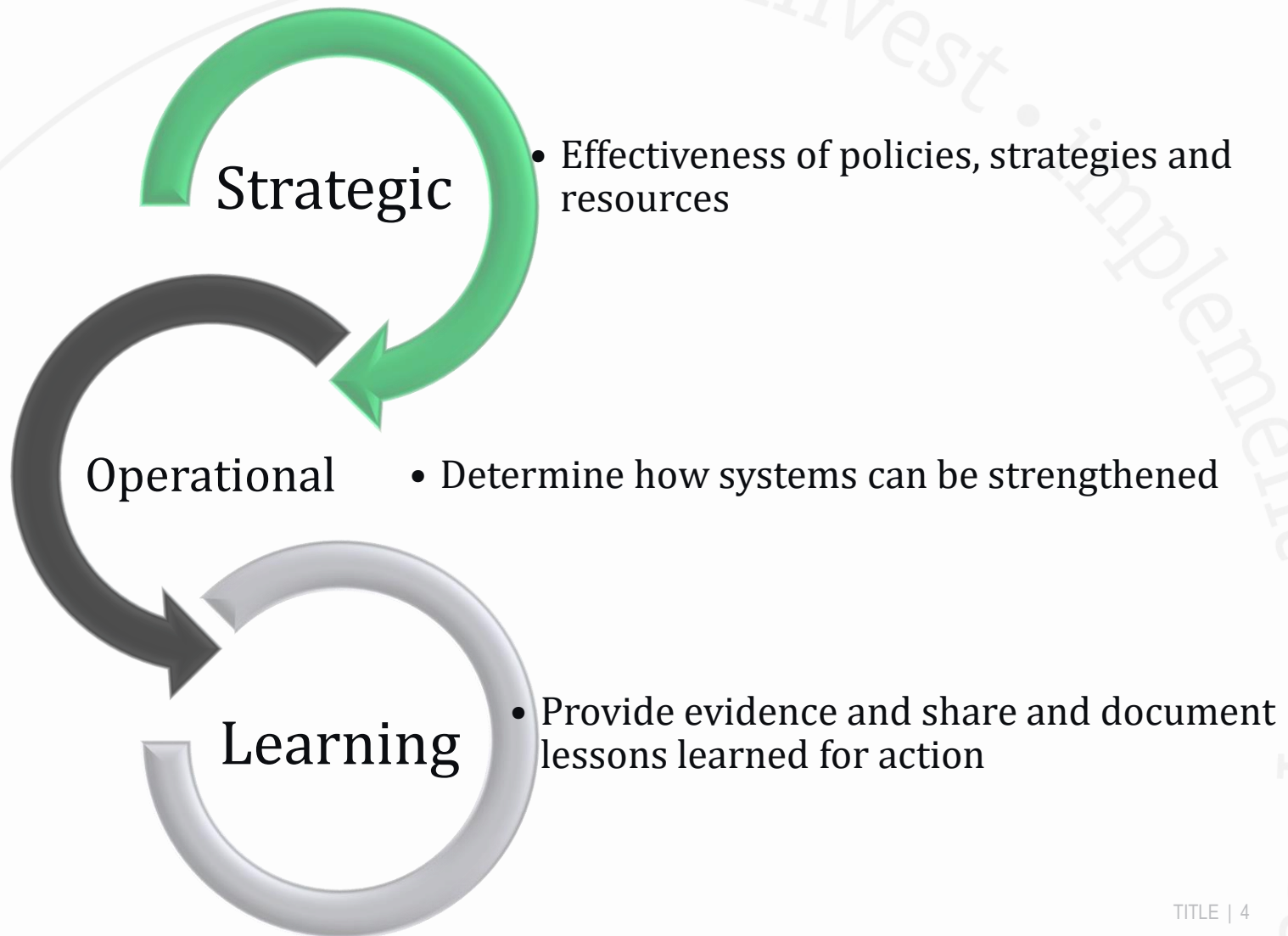
The World Food Programme joins the Single Registry. Management dashboards are developed and the system is linked to the Integrated Population Registration System.



The Single Registry is officially launched.



Goal



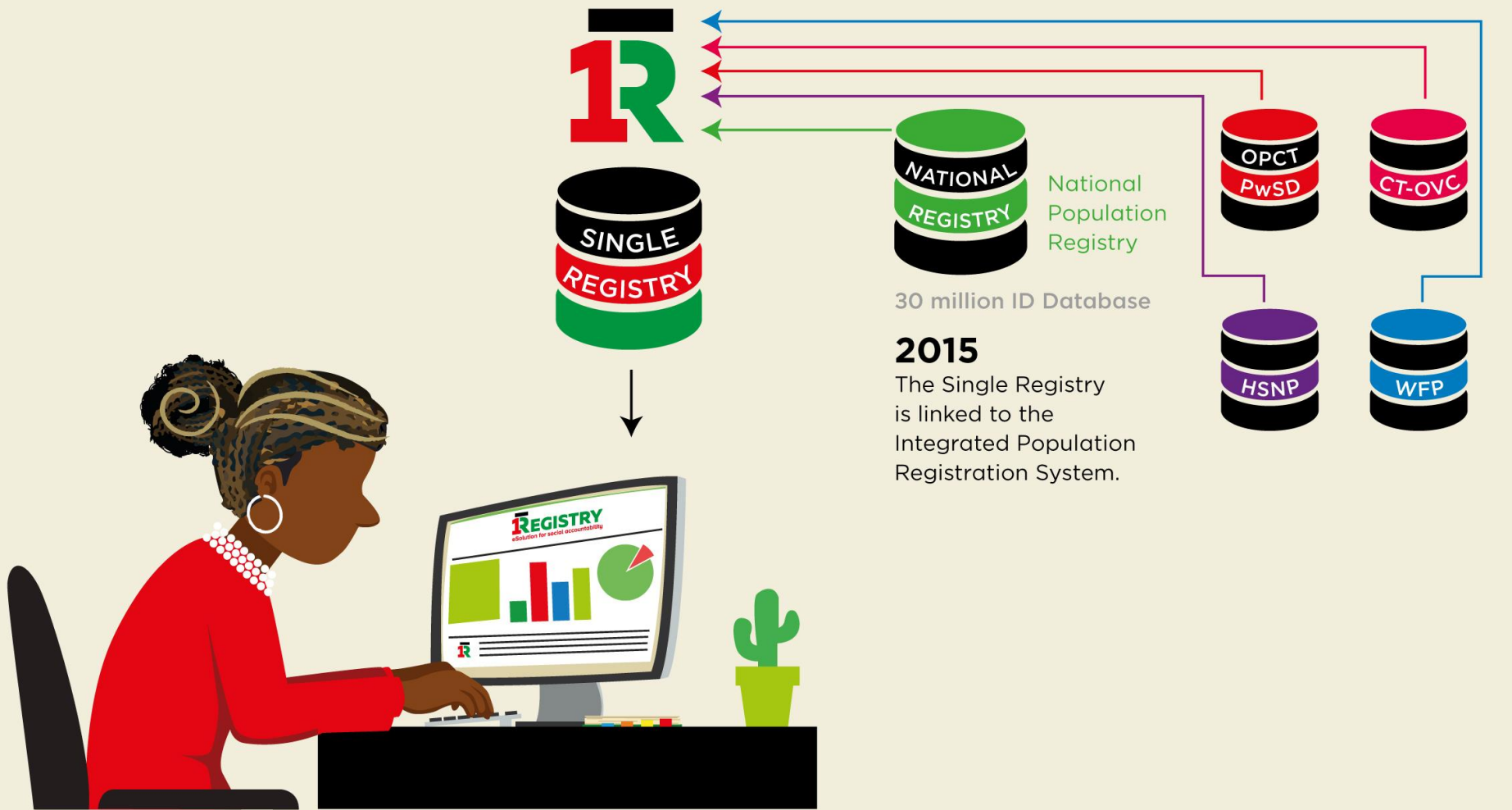
Functions



- The Single Registry specifically perform the following functions:
 - **Maintain an inventory of all social protection programmes in the country.**
 - **Prevention Error/Fraud.**
 - **Programme Efficiency and Effectiveness.**
 - **Monitoring Programme Implementation.**
 - **Basis for Emergency Response and other Complementary Initiatives.**



THE eSOLUTION



Features



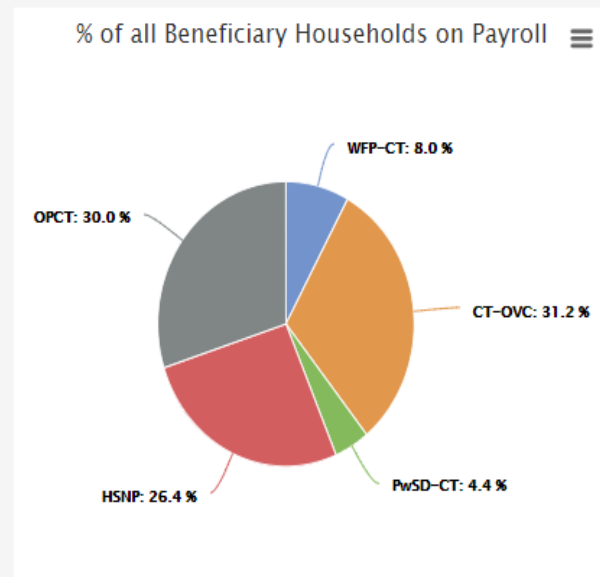
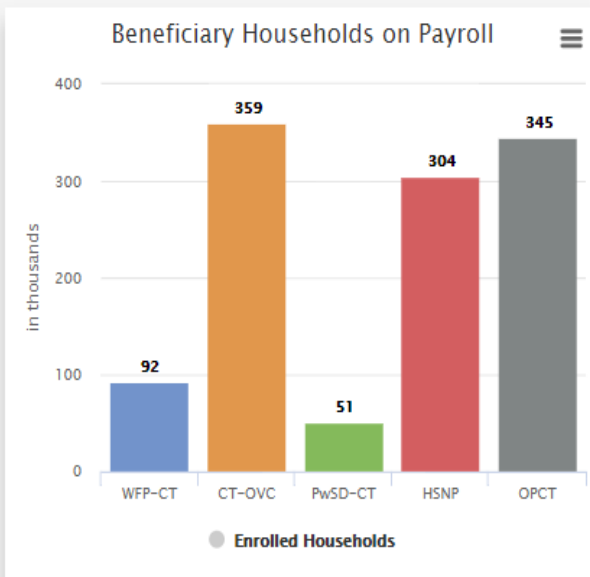
Single Registry for Social Protection



- HOME
- SUMMARY STATISTICS
- BENEFICIARIES**
- PAYMENTS
- MAPS
- REPORTS
- COMPLAINTS SYSTEM
- LOGIN

ANNUAL BENEFICIARY STATISTICS

Financial Year: 2016/2017 | Payment Frequency: Select All | Payment Type: Select All | **Search**



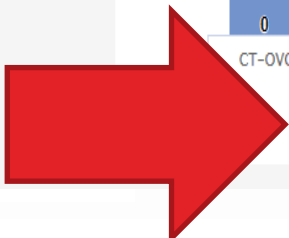
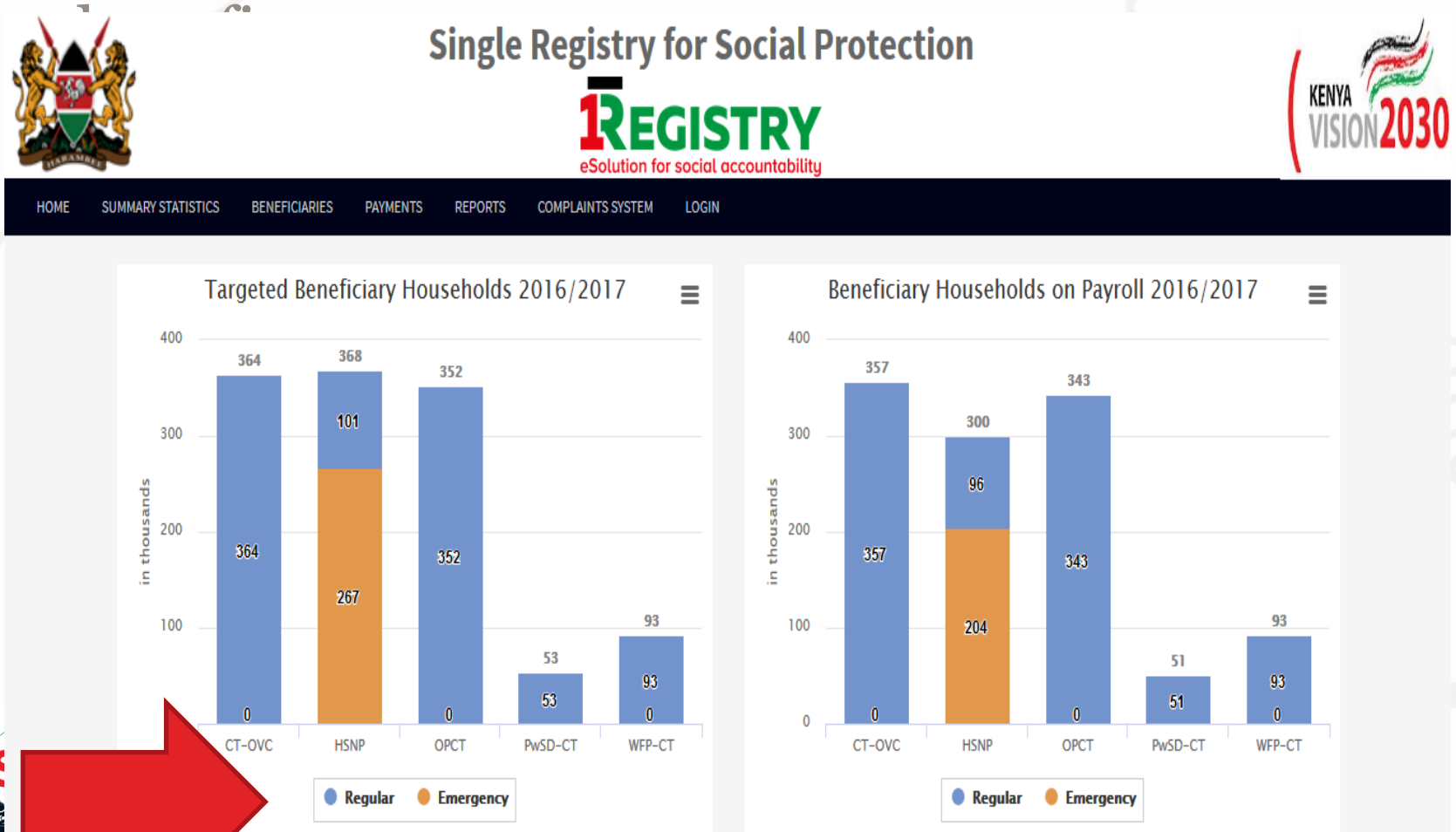
Programme	# Enrolled
CT-OVC	359,770
HSNP	304,236
OPCT	345,269
PwSD-CT	51,888
WFP-CT	91,899
Total	1,153,062



Features



- Emergency vs. regular



ant • impact

Features



- Downloadable public reports to PDF

Single Registry for Social Protection

1REGISTRY
eSolution for social accountability

REPORTS PAYMENTS REPORTS COMPLAINTS SYSTEM LOGIN

Report Group
By Beneficiary

Report Type: All Counties Programme: CT-OVC

County Name: --- All Counties --- Constituency Name: --- All Constituencies ---

Payment Frequency: Regular Payment Type: Cash

Produce pdf

1REGISTRY
eSolution for social accountability

SINGLE REGISTRY FOR SOCIAL PROTECTION

NUMBER OF BENEFICIARY HOUSEHOLD AS AT: 5/17/2017

Programme	County	Payment Frequency	Payment Type	Beneficiary
CT-OVC				
CT-OVC	BARINGO	Regular	Cash	8,121
CT-OVC	BOMET	Regular	Cash	5,675
CT-OVC	BUNGOMA	Regular	Cash	11,671
CT-OVC	BUSIA	Regular	Cash	10,038
CT-OVC	ELGEYO-MARAKWET	Regular	Cash	4,084
CT-OVC	EMBU	Regular	Cash	5,289
CT-OVC	GARISSA	Regular	Cash	5,812
CT-OVC	HOMA BAY	Regular	Cash	12,262
CT-OVC	ISIOLO	Regular	Cash	3,489
CT-OVC	KAJIADO	Regular	Cash	4,011
CT-OVC	KAKAMEGA	Regular	Cash	15,144
CT-OVC	KERICHO	Regular	Cash	6,801
CT-OVC	KIAMBU	Regular	Cash	10,014
CT-OVC	KILIFI	Regular	Cash	11,472
CT-OVC	KIRINYAGA	Regular	Cash	4,496



Maps



MAPPING COMPONENT

Programme Filter

Single Programme

Programme

× HSNP

Payment Frequency

Emergency

County Filter

Multiple Counties

County Name

select County

Constituency Name

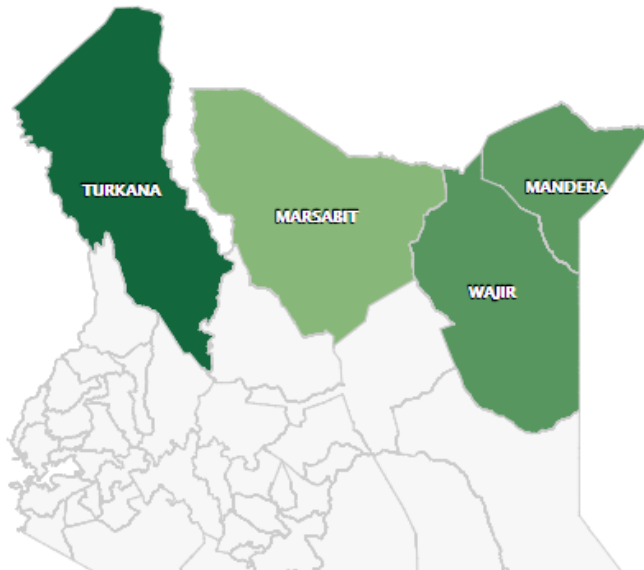
select Constituency

Preview Map



HSNP Programme(s)

All County(s)



Programme	Ben	Counties
HSNP - EMG	267,259	4
HSNP - REG	101,689	4

More Maps



Single Registry for Social Protection



- HOME
- SUMMARY STATISTICS
- BENEFICIARIES
- PAYMENTS
- MAPS**
- REPORTS
- COMPLAINTS SYSTEM
- LOGIN

MAPPING COMPONENT

Programme Filter

Multiple Programme

Programme

CT-OVC OPCT

Payment Frequency

Select All

County Filter

Multiple Counties

County Name

SIAYA

Constituency Name

--- All Constituencies ---

Preview Map

+

-

CT-OVC, OPCT Programme(s)

SIAYA County(s)

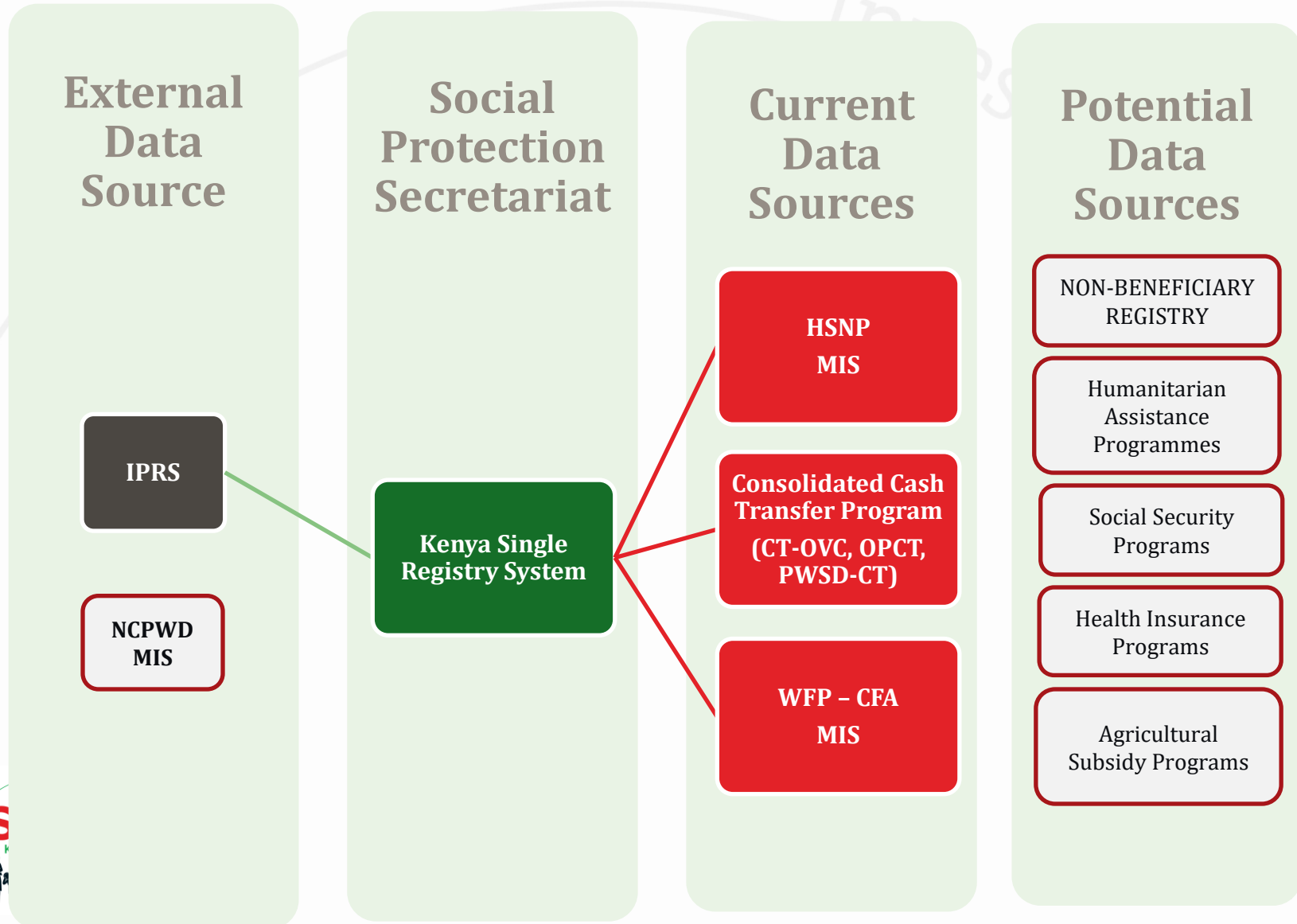


Programme	Ben	Constituencies
CT-OVC - REG	8,281	6
OPCT - REG	5,713	6



ct

Single Registry Potential Data Sources



Next Steps



Complimentary Initiative Module

Establish SR legislative Framework

Generic County SP MIS

SP Sector M&E Framework

SP Referral System

Data modelling and analysis

Non-Beneficiary Registration System

Link to Birth and Death Register



2018
**Social
Protection
Conference**
KENYA

invest • implement • impact



<http://www.socialprotection.or.ke/single-registry>

THANK YOU FOR YOUR TIME

Abbreviations:



- **SP:** Social Protection
- **CT-OVC:** Cash Transfer for Orphans and Vulnerable Children
- **HSNP:** Hunger Safety Net Programme
- **IPRS:** Integrated Population Registration Services
- **OPCT:** Older Persons Cash Transfer
- **PWSD-CT:** Persons With Severe Disabilities Cash Transfer
- **WFP:** World Food Programme

