



REPUBLIC OF KENYA

MINISTRY OF LABOUR AND SOCIAL  
PROTECTION  
STATE DEPARTMENT FOR SOCIAL  
PROTECTION & SENIOR CITIZEN AFFAIRS

# ACCELERATING INCLUSIVE AND INTEGRATED SOCIAL PROTECTION

## Integration of Social Protection Systems in Tackling Life Cycle Risks

**Gituro Wainaina  
University of Nairobi**

**April 4, 2023**



## Perspective



About 4.6% have some form of disability and most live in rural areas - inclusion is key



About 68% of our parents are between 65 and 75 years and face low incomes, insecurity, and inadequate health services



Is **ALL** about social protection - inclusion



MINISTRY OF LABOUR AND SOCIAL PROTECTION  
STATE DEPARTMENT FOR SOCIAL PROTECTION & SENIOR CITIZEN AFFAIRS

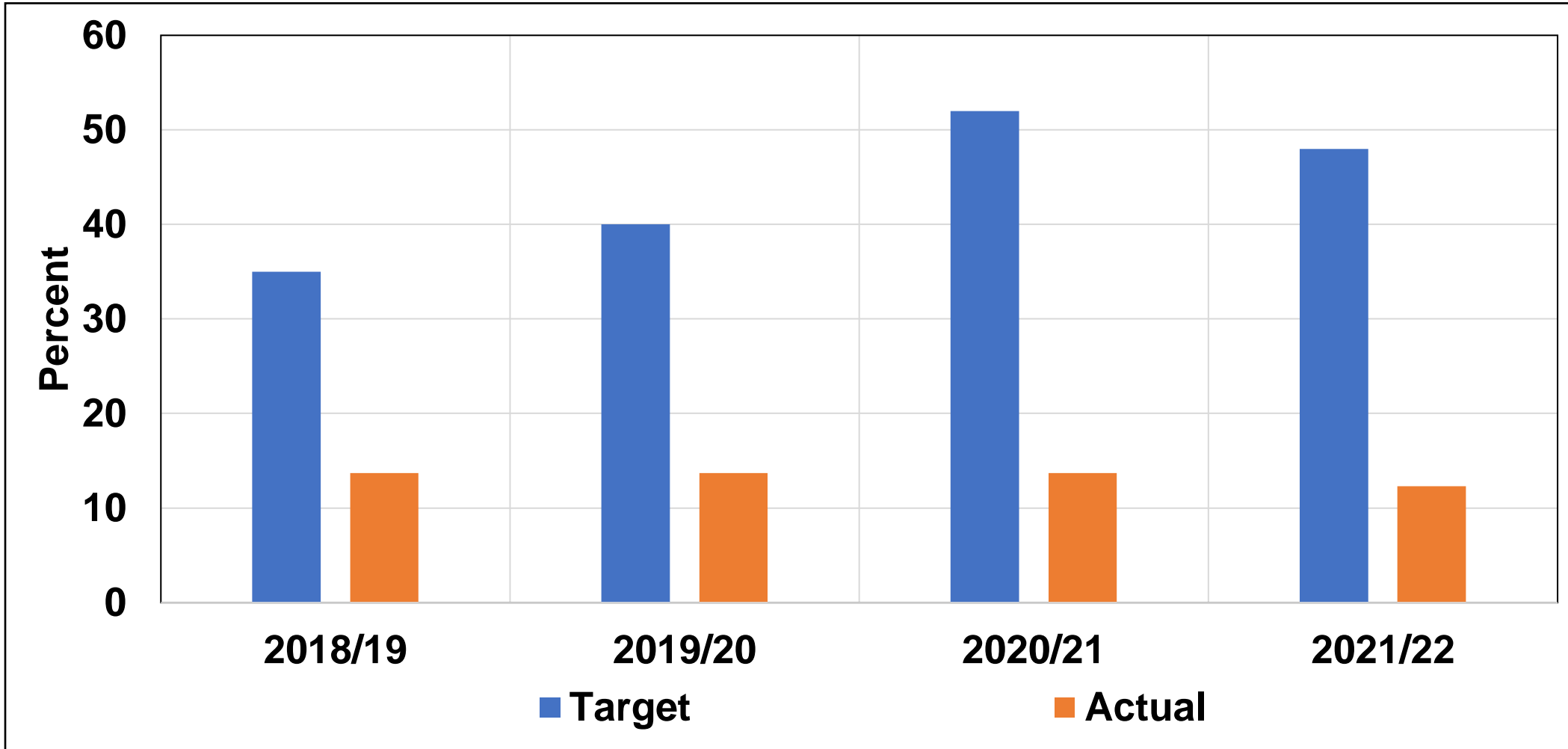
REPUBLIC OF KENYA

Accelerating Inclusive and Integrated Social Protection

**SOCIAL PROTECTION**  
enhancing synergies, improving lives



## Vulnerable Population Covered by Social Protection Systems (Percent)



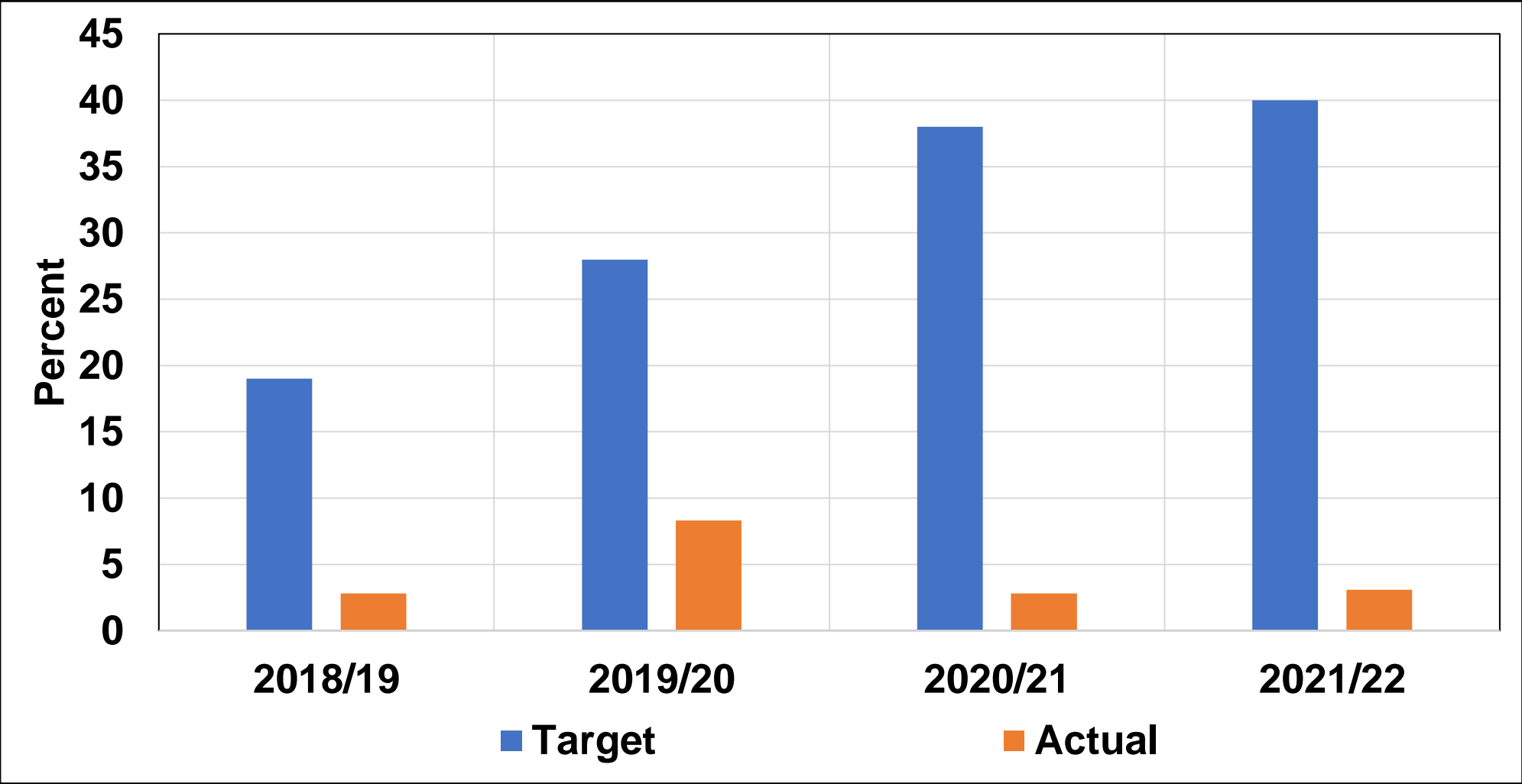
REPUBLIC OF KENYA

MINISTRY OF LABOUR AND SOCIAL PROTECTION  
STATE DEPARTMENT FOR SOCIAL PROTECTION & SENIOR CITIZEN AFFAIRS

Accelerating Inclusive and Integrated Social Protection

**SOCIAL PROTECTION**  
enhancing synergies, improving lives

# National Safety Net Beneficiaries Enrolled in National Hospital Insurance Fund Cover (Percent)



MINISTRY OF LABOUR AND SOCIAL PROTECTION  
STATE DEPARTMENT FOR SOCIAL PROTECTION & SENIOR CITIZEN AFFAIRS

REPUBLIC OF KENYA

Accelerating Inclusive and Integrated Social Protection





❖ In 2021, Kenya invested around 0.35% of GDP in social protection compared to 0.04% in Ghana, 0.12% in Zambia, and 3.2% in South Africa

❖ Kenya's investment in social assistance is highest in East Africa



REPUBLIC OF KENYA

MINISTRY OF LABOUR AND SOCIAL  
PROTECTION  
STATE DEPARTMENT FOR SOCIAL  
PROTECTION & SENIOR CITIZEN AFFAIRS

Accelerating Inclusive and Integrated Social Protection

**SOCIAL  
PROTECTION**  
enhancing synergies, improving lives



So, is Glass

Half Empty



Half Full



REPUBLIC OF KENYA

MINISTRY OF LABOUR AND SOCIAL PROTECTION  
STATE DEPARTMENT FOR SOCIAL PROTECTION & SENIOR CITIZEN AFFAIRS

Accelerating Inclusive and Integrated Social Protection



# Introduction



## Social Protection

- ❖ Is today an instrument of development as articulated in Kenya Kwanza manifesto, Kenya Vision 2030, Agenda 2063, and SDGs
- ❖ Is a strategy for managing social risk and hence a development model to ringfence vulnerable
- ❖ Successful programmes include Brazilian and South African social pension schemes and conditional cash transfers in Mexico and Brazil

## Beneficiaries of social protection programmes (PwSD-CT is low compared to other programmes)

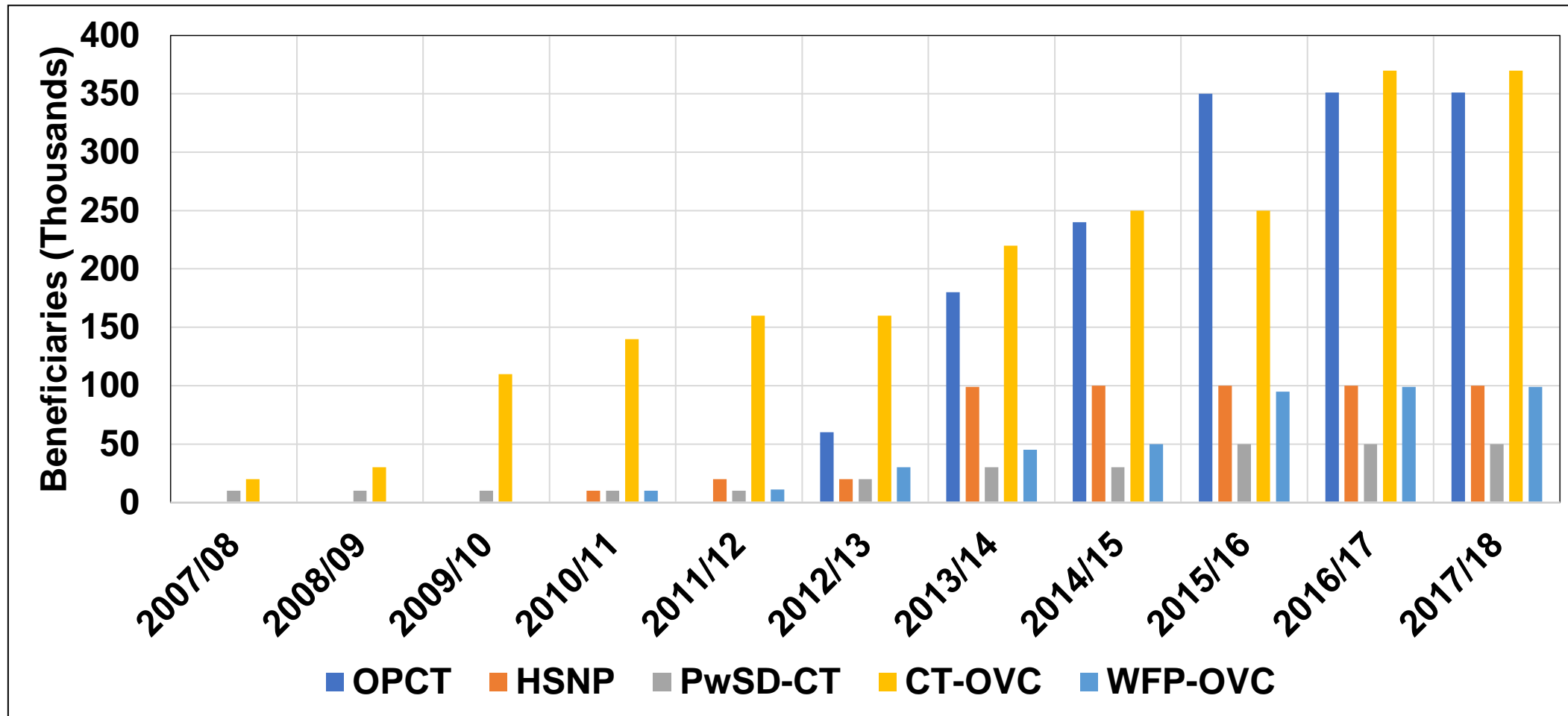
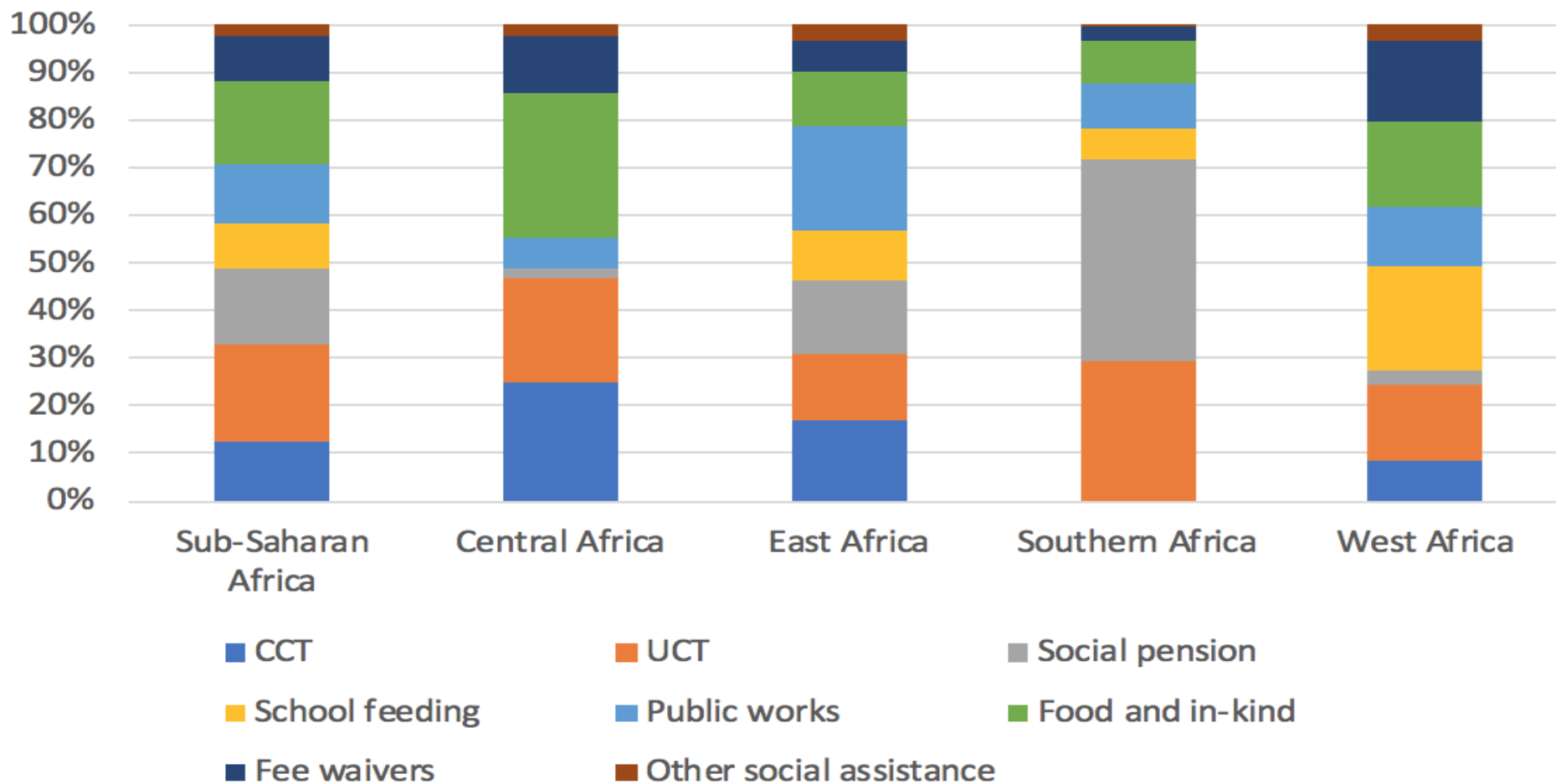




Figure 1: Forms of social protection in Africa



# Challenges



1. Recovery from COVID-19

1. High fuel and food prices

1. High public debt

1. Drought



REPUBLIC OF KENYA

MINISTRY OF LABOUR AND SOCIAL  
PROTECTION  
STATE DEPARTMENT FOR SOCIAL  
PROTECTION & SENIOR CITIZEN AFFAIRS

Accelerating Inclusive and Integrated Social Protection

**SOCIAL  
PROTECTION**  
enhancing synergies, improving lives

## Interventions



**1. Focus and fastrack NHIF coverage for senior citizens and enhance targeted NSSF contributions**

**1. Enhance robust delivery systems for delivering all social protection programmes, especially targeted programmes**

**1. Improve targetting of selected categories, families, or individuals**



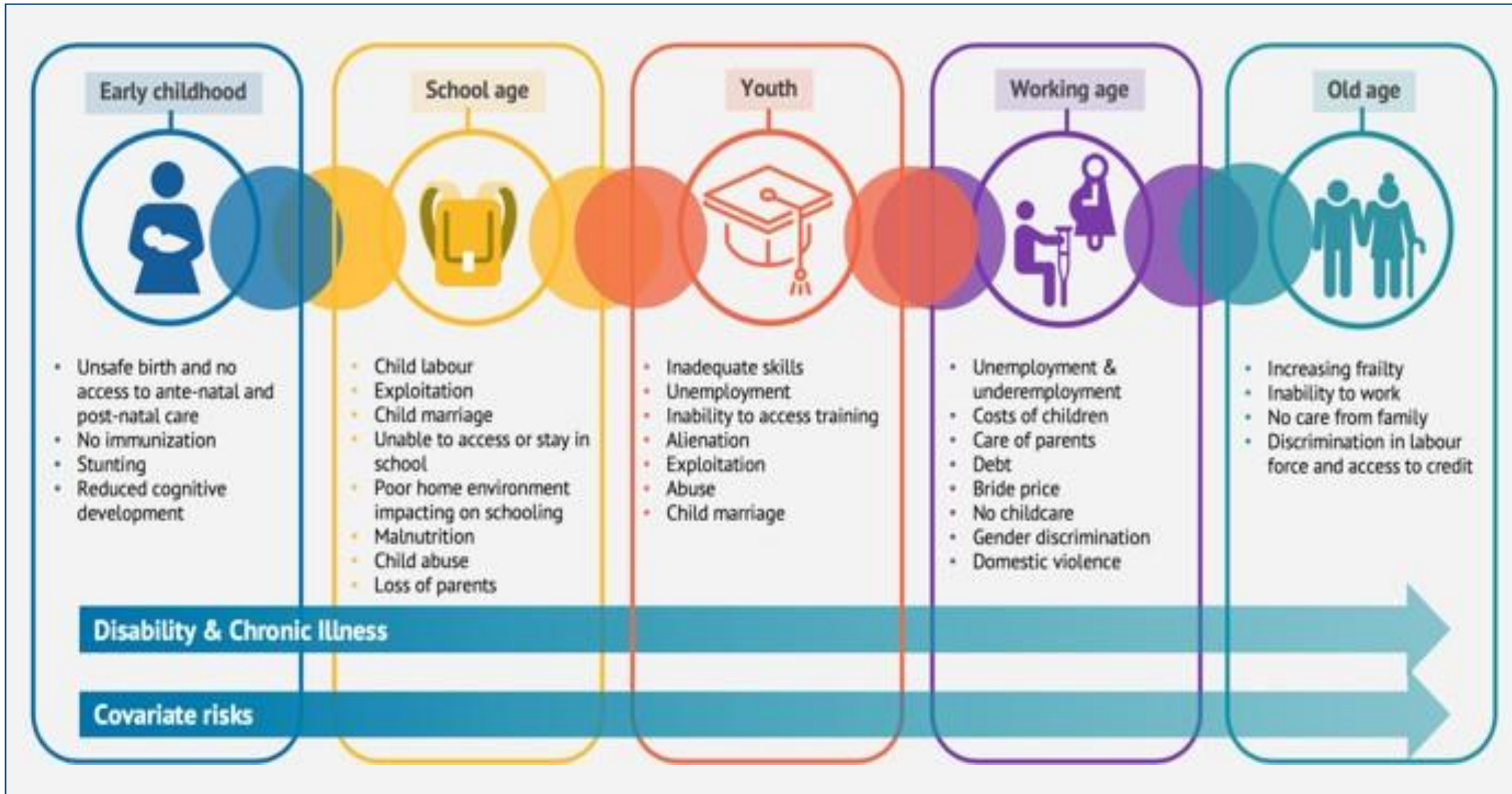
## Conclusion



- ❖ **Social protection is a key tool for us to address challenges faced by our senior citizens and physically challenged**
- ❖ **There is need, therefore, to focus on inclusive and sustainable social protection programmes**
- ❖ **However, through impactful social protection programmes, more people should, eventually be graduating from these programmes**



# Model of a Lifecycle Social Protection System





## So is the Glass Half Full or Half Empty?



MINISTRY OF LABOUR AND SOCIAL  
PROTECTION  
STATE DEPARTMENT FOR SOCIAL  
PROTECTION & SENIOR CITIZEN AFFAIRS

REPUBLIC OF KENYA

Accelerating Inclusive and Integrated Social Protection

**SOCIAL  
PROTECTION**  
enhancing synergies, improving lives



REPUBLIC OF KENYA

MINISTRY OF LABOUR AND SOCIAL  
PROTECTION  
STATE DEPARTMENT FOR SOCIAL  
PROTECTION & SENIOR CITIZEN AFFAIRS

# ASANTENI SANA

[wainainagituro1956@gmail.com](mailto:wainainagituro1956@gmail.com)

[wgituro@uonbi.ac.ke](mailto:wgituro@uonbi.ac.ke)

[wainainagituro@yahoo.com](mailto:wainainagituro@yahoo.com)

+254-722-788-718

2023  
KENYA  
SOCIAL PROTECTION  
CONFERENCE

